



# PROJECT PRODUCT CATALOGUE

IPC/NVR & EVS/PTZ/Thermal/Transmission/Display & Control/Video Intercom/  
Access Control/Mobile & Traffic/Software/Accessories



UK & IRELAND



## Dear Colleagues,

We are pleased to announce the release of the Dahua Project Product Catalogue H2 2020. Unlike the catalogue released in January, in which the products selected were mainly for small-to-medium projects; this Project Product Catalogue contains products that ideally suit large-scale projects.

Dahua UK & Ireland aims to be your trustworthy and supportive partner by providing excellent products by applying cutting-edge technologies and delivering a fast end-to-end service.

### Innovation

Innovation is one of the key driving forces and core competencies in Dahua's development. Each year, the company invests approximately 10% of its sales revenue into R&D and innovation. Dahua has continuously been at the forefront of technology development in the industry, satisfying the diverse needs of its customers.

At present, Dahua has established five research institutes: Advanced Technology, Big Data, Chip Technology, Central and Network Security Institute, which are the cornerstones for the research and development of AIoT.

### Quality

Guided by customer needs and dedication in customer success, Dahua utilises its solid manufacturing capabilities and robust overall process quality system in providing strong support for a high-quality delivery of products and services.

### Integrated Supply Chain

The integrated planning system assists Dahua's information system and enables efficient coordination between design,

procurement, production, sales and service, improving product supply and service response capabilities. Additionally, Dahua Technology has been continuously promoting the development of its global supply network. In addition to its headquarters in China, the company has established regional supply centers in Hungary, Mexico and other countries, and has built regional HUB warehouses in its core logistics distribution centers such as the Netherlands and Dubai, forming a multilevel supply network.

### Lean and Intelligent Manufacturing Strategy

Focusing on lean planning, lean procurement, lean manufacturing and lean logistics, Dahua Technology has developed its 2025 Dahua Intelligent Manufacturing strategy on the basis of refined operation. Dahua Smart (IoT) Industrial Park adopts advanced manufacturing equipment and a series of self-developed automatic equipment for different batch production modes.

### Ongoing Reliability Lab (ORL)

The Dahua ORL has obtained national CNAS and IEC CTF2 certifications, meeting testing requirements across various categories, to ensure its products can maintain the same high quality in high-temperature, humid, sandy or dusty, marine, or vibrating environments.

### Service

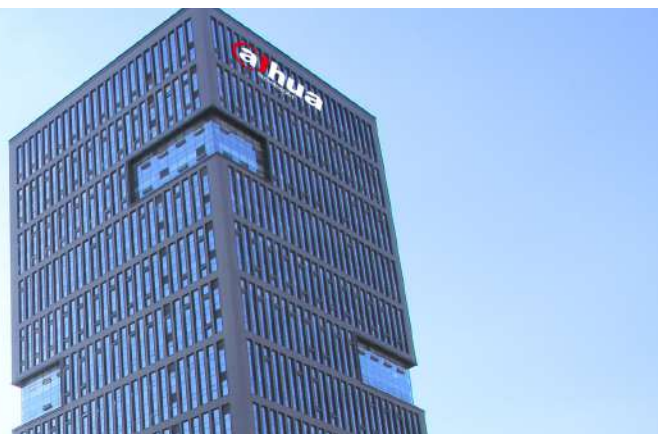
With professional, fast, and end-to-end delivery and service capabilities, Dahua has established an integrated business centre, including operation and maintenance, service, in-depth design service, technical service, training certification and customer service to provide global customers with delivery and other services throughout the solution's life cycle.

# CONTENTS

04	●	<b>Company Overview</b>
05-16	●	<b>IP Camera</b> Panoramic Series/WizMind Scenario Defined Series/WizMind 7 Series/WizMind 5 Series/Special Series
17-24	●	<b>NVR &amp; EVS</b> WizMind IVSS Series/NVR600-4KS2 Series/EVS Series
25-30	●	<b>WizMind PTZ</b>
31-32	●	<b>Anti-corrosion Products</b>
33-34	●	<b>Explosion-proof Products</b>
35-37	●	<b>WizMind Thermal</b>
38-44	●	<b>Transmission</b> Switch/Wireless Transmission
45-53	●	<b>Display &amp; Control</b> Monitor/Video Wall/Digital Signage/LED Screen/Controller
54-61	●	<b>Video Intercom</b> Large Apartment Solution/Small Apartment Solution
62-66	●	<b>Access Control</b>
67-77	●	<b>Mobile &amp; Traffic</b> Mobile/Traffic
78-91	●	<b>Accessory</b> Solar Power System/Radar System/Powering/Cabinet/Surveillance Box
92-96	●	<b>Video Management Software</b> DSS Express/DSS Pro/DMSS
97	●	<b>Dahua Eco System</b>



## Company Overview



Dahua Technology is a world-leading video-centric smart IoT solution and service provider. Based on technological innovations, Dahua Technology offers end-to-end security solutions, systems, and services to create value for city operations, corporate management and consumers.

With more than 16,000 employees and over 50% engaged in R&D, Dahua Technology has solutions, products and services applied in 180 countries and regions. Since the launch of the industry's first self-developed 8-channel embedded DVR in 2002, Dahua Technology has devoted itself to technological innovation and been continuously increasing its investment in R&D, putting around 10% of its annual sales revenue into R&D. The company continues to explore emerging opportunities based on video IoT technologies and has already established business in machine vision, video conferencing systems, professional drones, electronic license plates, RFID and robotics etc.

Moreover, Dahua Technology has established more than 200 provincial offices in China as well as 53 overseas subsidiaries and representative offices covering the Asia Pacific, North America, Europe, Africa and other regions to provide customers with efficient and high-quality services. In addition, Dahua products are widely applied in key vertical markets such as public security, traffic, retail, banking and finance and energy etc. Numerous major projects have been installed with Dahua solutions and products – China International Import Expo, the Rio Olympics, G20 Hangzhou Summit, BRICS Xiamen Summit,

Lincoln City Surveillance in UK, Recife CBTU Subway in Brazil as well as many others.

As a national high-tech enterprise, Dahua has applied for over 2,500 patents, including more than 150 international patents. Regarding manufacturing, the company's goal is to deliver the highest quality products with leading price performance to our global customers. It invests in process standardization, automation, advanced manufacturing technologies and continuous improvements to enhance the quality and efficiency of production lines.

Committed to the mission of "Enabling a safer society and smarter living", Dahua Technology adheres to its core value of "customer-centered," in order to provide the market with excellent quality and service, to create more value for customers, and make unremitting efforts to build a safe, intelligent, convenient and efficient society.







# IP Camera

## Panoramic Series

### Overview

The panoramic series is designed for applications which require a wide-area coverage for situational awareness. You can monitor what's going on in the area. With its all-in-one design, this series is a perfect solution to replace multiple conventional cameras, reducing complexity and saving installation and maintenance costs.

- Crowd Map (8 areas max)
- Smart Tracking
- Queue Management (up to 4 queues)
- Heatmap

### Highlights

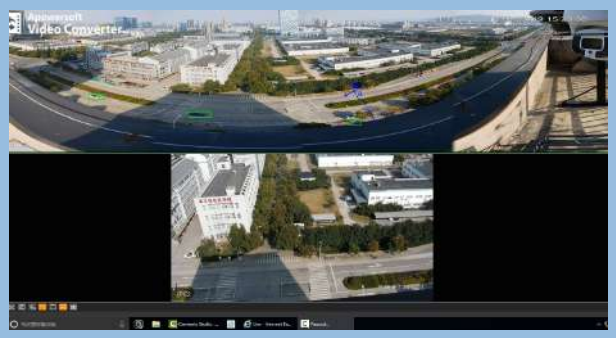
● **Crowd Map:**

Shows how many people in a specific area and allows setting of thresholds to trigger alarm. The crowd map is displayed in a panoramic view, which can show where the crowded areas are. It provides global crowd density threshold settings and alarms, as well as alarm integration for global crowd density and area people threshold.



● **Smart Tracking:**

Smart Tracking allows the PTZ dome to automatically follow the target that triggered the IVS rule in the panoramic view.



● **Queue Management:**

The camera detects and tracks targets by using advanced image processing technology and a deep learning algorithm. You can draw 4 polygon areas, and count people in each area. When the number of people in the area or the strand time is greater than or equal to/lower than or equal to the defined threshold, the alarm will be triggered.



**Queue Quantity**  
Supports 4 queues max.  
Draw a region depending on your requirement.



**Queue Population Alarm**  
0~30 queue population setting, with options for more than or less than the threshold to trigger alarm.



**Queue Strand Time Alarm**  
1~1800s queue time option to trigger the alarm.



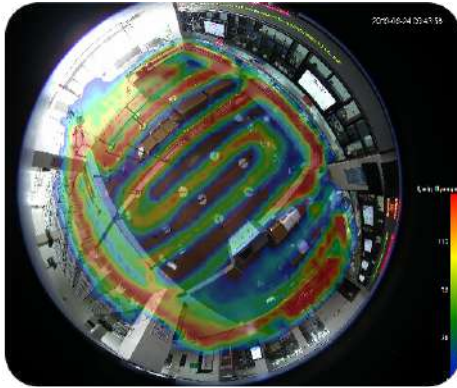
**Display**  
Real-time display of each target that stays in the queue, or population display in each queue.

• **Heatmap:**

It supports heat map for number of people and average dwell times. You can observe customer regions of interest from two aspects: number of people and time.

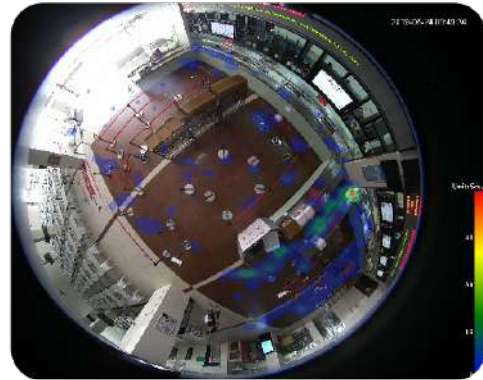
**Heat Map for Number of People**

Set your desired population threshold. It allows maximum of 1 week range for statistics, and supports picture output.



**Heat Map for Average Strand Time**

Set your desired dwell time threshold (at least 1 minute). It allows maximum of 1 week range for statistics and supports picture output.



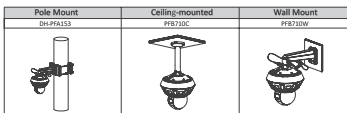
**Panoramic Series**



PSDW81642M-A360  
PSDW8842M-A180

**8/4x2MP Multi-Sensor Panoramic Network Camera+PTZ Camera**

- Panoramic: 8/4 \* 1/1.8" 2 Megapixel progressive scan CMOS
- PTZ: One 1/1.8" 4 Megapixel progressive scan CMOS
- Supports 360/180-degree panoramic view
- Starlight technology
- H.265/H.264 triple-stream encoding
- Day/Night (ICR); 3D DNR; AWB; AGC; BLC
- IR distance up to 400 m
- Smart tracking
- Tripwire
- Intrusion
- Crowd map



**MOUNTING ACCESSORIES**

Optional:



PFA153  
PFA153-Heavy pole-mounted bracket-DH816W2



PFB710C  
Hang-mounted bracket

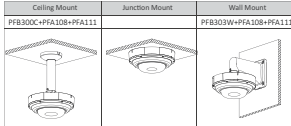


PFB710W  
Wall-mounted bracket



### IPC-PDBW5831-B360 4x2MP IR Dome Network Camera

- Four 1/2.8" 2Megapixel progressive scan STARVIS™ CMOS
- H.265 & H.264 dual-stream encoding
- 25/30fps@2M (1920x1080), 2.7mm~12mm motorized lens
- Smart Detection supported
- WDR (140dB), Day/Night (ICR), 3DNR, AWB, AGC, BLC
- Max. IR LEDs Length 30m
- Micro SD memory, IP67, IK10, PoE+
- Wide Area Coverage (360° surveillance covered)
- Flexible Configurations (Adjustable lens)
- One IP, 4 channels



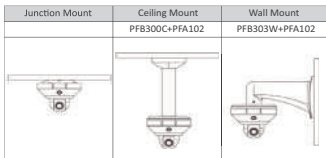
#### MOUNTING ACCESSORIES

Optional:



### PSDW5631S-B360 PSDW5231S-B120 3/1 x 2MP Multi-Sensor Network Camera+PTZ Camera

- Panoramic: 3/1 \* 1/2.7" 2Megapixel progressive scan CMOS
- PTZ: One 1/2.7" 2Megapixel progressive scan CMOS
- H.265/H.264 dual-stream encoding
- 25fps@1920x1080
- Supports 360/120-degree view
- Day/Night (ICR), 3DNR, AWB, AGC, BLC
- Max IR LEDs Length 15m
- Micro SD card slot, up to 256GB
- PoE+
- IVS Function (1ch)
- One IP, 4/2 channels



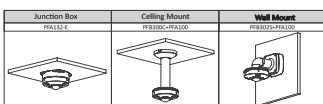
#### MOUNTING ACCESSORIES

Optional:



### IPC-EBW81242 12MP Panoramic Network IR Fisheye Camera

- 12MP, 1/1.7" CMOS image sensor
- Max output 12MP (4000x3000)@30fps
- 3D DNR, AWB, HLC, BLC, ROI, SVC, SMART H.264/H.265
- People counting in multiple areas, queue management in multiple areas, heatmap (number of people/time), and track map
- 2/2 Alarm in/out, 1/1 audio in/out
- 12V DC/POE power support
- IP67, IK10 protection



#### MOUNTING ACCESSORIES

Optional:





# IP Camera

## WizMind Scenario Defined Series

### Overview

The Dahua Stereo Vision Behaviour Analysis camera uses dual-lens imaging technology to capture 3D depth information from within images. The camera pairs this information with deep learning algorithms to analyse and detect human bodies and track target objects in real-time.

- Five Types of Behaviour Analysis: fall detection, dwell time detection, people approach, people NO. error detection, violence detection

### Highlights

• Five Types of Behaviour Analysis:

- Fall Detection:** The elderly are prone to fall over, if not detected and assisted quickly, this may lead to death.
- Dwell Time Detection:** Standing in the designated area longer than the set time will trigger alarm.
- People Approach Detection:** It will send an alarm when the distance between people is too close.
- Violence Detection:** Fighting or vandalism will trigger the alarm.
- People No. Error Detection:** It can detect whether the monitored people are on duty or not.



Fall Detection



Dwell Time Detection



People Approach Detection



Violence Detection

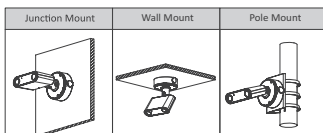
### WizMind Scenario Defined Series



#### IPC-HFW8241X-3D

#### 2MP Dual-Lens Stereo Vision AI Network Camera

- Two 1/2.8" 2Megapixel progressive scan STARVIS™ CMOS
- H.265 & H.264 triple-stream encoding
- 25fps/30fps@1080P (1920x1080)
- WDR (120dB), Day/Night(ICR), 3DNR,AWB,AGC,BLC
- 2.8mm fixed lens (3.6mm, 6mm optional)
- 3/2 Alarm in/out, 1/1 audio in/out, build-in MIC
- Max. IR LEDs Length 40m
- Micro SD memory 256GB, IP67, PoE
- Five Types of Behavior Analysis: fall detection, strand detection, people approach, people no. error detection, violence detection



**MOUNTING ACCESSORIES**

Optional:



PFA154  
Pole Mount



# IP Camera

## WizMind 7 Series

### Overview

With an advanced deep learning algorithm, Dahua WizMind 7 series IP cameras support various intelligent functions and satisfies the requirements in different scenes. The camera can accurately detect people, vehicles, and non-motor vehicles, and supports face recognition and metadata. This camera series features ultra starlight night vision effect, and works with an ultra-low stream. It supports a dust-proof function, waterproof function and vandal-proof function, complying to the standards of IP67 and IK10.

- Video Structurization (7 human body attributes, 10 car attributes)
- Face Recognition (6 attributes and 8 expressions, 5 databases with up to 200,000 face images)
- People Counting (4 areas of independent detection; up to 80 people in total)
- Perimeter Protection (False alarm less than 2%)
- Privacy Protection (Face/Human Body Mosaic)

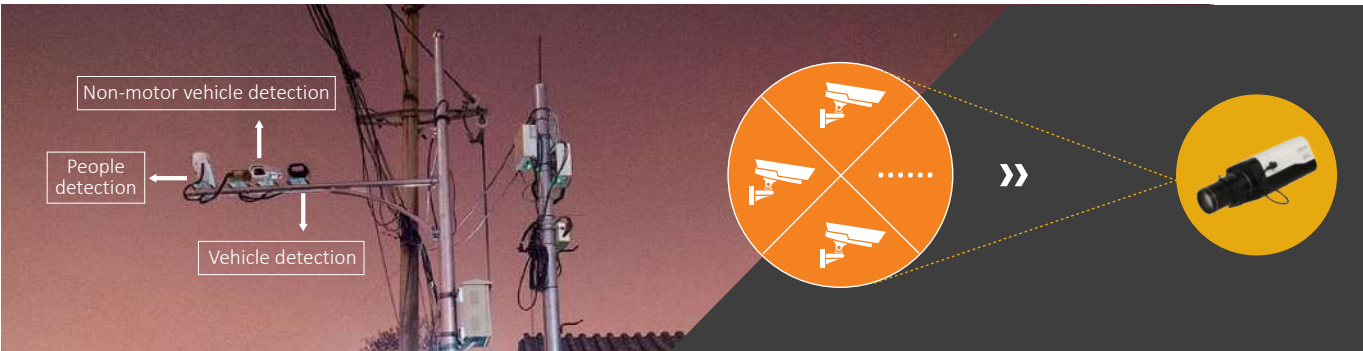
### Highlights

• **Video Structurization :**

With a deep learning algorithm, Dahua Video Structurization technology can detect, track, and capture vehicle, non-motor vehicle and people, with options to select the best images, and extract attributes.

**Equivalent to Multiple Traditional Intelligent Product**

Simultaneous detection of people, motor vehicle, non-motor vehicle.  
Reduces overall programme cost, decreases installation challenges, and improves maintenance efficiency.



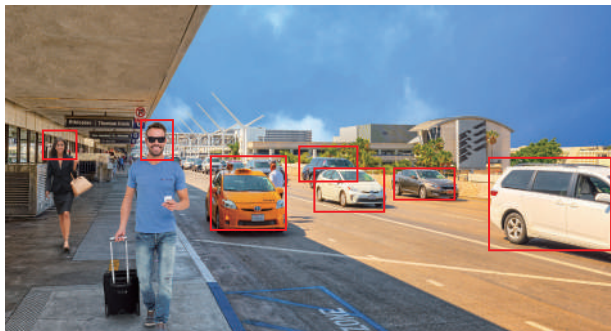
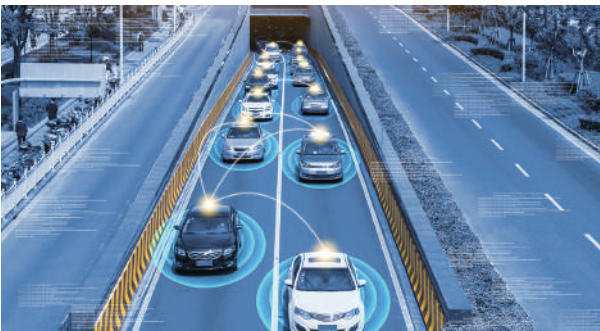
**Key Indicators**

The maximum number of simultaneous detection targets is 96.

Massive data structure of vehicles: 11 types, 12 colours, 86 car makes.

**Attribute Extraction**

Supports 7 human body attributes, 10 car attributes.



• **Face Recognition :**

This technology is capable of identifying or verifying a person from a digital image or a video frame from a video source. It works by comparing selected facial features from a given image with faces within a database.



**Real-time Recognition**

- Maximum simultaneous detection and tracking number: 32
- Supports up to 200,000 face images
- Supports black and white list integrated alarm function
- Supports face database information encryption
- Support 2 kinds of capture strategies: optional capture, recognition priority

**Non-living Filtering**

After the camera detects the face target, it supports the living/non-living recognition of the target, filters the non-living results, and reduces capturing errors caused by non-living face images appearing in billboards, photos, posters or other media. The rate can reach more than 95%.



**Recognition Priority**

It is suitable for application scenarios where the face is opened and the flow is small, such as gates, automatic doors, corridors, etc.

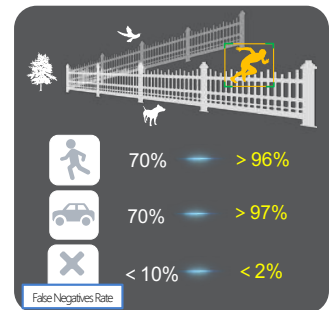
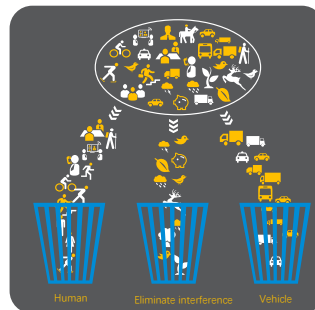


• **Perimeter Protection :**

Perimeter protection system refers to the fortifications built to either keep intruders out or to keep captives contained within the area that the boundary surrounds.

**Benefit 1:** False alarm rate of less than 2%. The rate of false alarms triggered by small animals, tree movements, shadows, and bright lights is significantly lower than traditional IVS solutions.

**Benefit 2:** Accurate classification and detection of humans and vehicles, greatly reducing video search time.



• **Privacy Protection :**

Dahua Privacy Protection technology can mask the detected face and human body to protect the privacy of special targets.

- Based on a Deep Learning Algorithm, it supports real-time mosaic covering of the face or body part detected in the monitored image to protect someone's privacy.

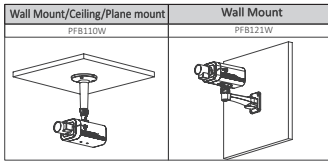


Wizmind 7 Series



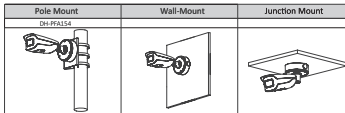
IPC-HF7442F-FR  
4MP AI BOX Network Camera

- 4MP, 1/1.8" CMOS image sensor, low illuminance, high image definition
- Max outputs 4MP (2688x1520) @50 fps/60 fps
- H.264 & H.265 coding, high compression ratio
- Wide dynamic, day/night, 3D noise reduction, AWB, HLC, BLC
- ROI, SVC, SMART H.264/H.265, flexible coding, applicable to various bandwidth and storage environments
- With deep learning algorithm, it supports face recognition, perimeter protection, people counting, etc.
- 24V AC/PoE/12V DC power support
- Five streams for three-channel HD video



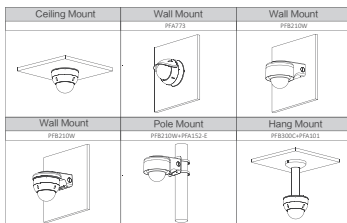
HFW7442H-ZFR  
HFW7442H-Z4FR  
4MP AI IR Bullet Network Camera

- 4MP, 1/1.8" CMOS image sensor, low illuminance, high image definition
- Max outputs 4MP (2688x1520) @50 fps/60 fps
- H.264 & H.265 coding, high compression ratio
- ZFR: 2.7–12 mm; Z4FR: 8–32 mm
- Wide dynamic, day/night, 3D noise reduction, AWB, HLC, BLC
- ROI, SVC, SMART H.264/H.265, flexible coding, applicable to various bandwidth and storage environments
- With deep learning algorithm, it supports people counting, face recognition, perimeter protection etc
- 24V AC/PoE/12V DC power support
- Five streams for three-channel HD video
- IP67, IK10 protection grade



HDBW7442H-ZFR  
HDBW7442H-Z4FR  
4MP AI IR Dome Network Camera

- 4MP, 1/1.8" CMOS image sensor, low illuminance, high image definition
- Max outputs 4MP (2688x1520) @50 fps/60 fps
- H.264 & H.265 coding, high compression ratio
- ZFR: 2.7–12 mm; Z4FR: 8–32 mm
- Wide dynamic, day/night, 3D noise reduction, AWB, HLC, BLC
- ROI, SVC, SMART H.264/H.265, flexible coding, applicable to various bandwidth and storage environments
- With deep learning algorithm, it supports people counting, face recognition, perimeter protection etc
- 24V AC/PoE/12V DC power support
- Five streams for three-channel HD video
- IP67, IK10 protection grade



# IP Camera

## WizMind 5 Series

### Overview

WizMind 5 series IP cameras contain Face Detection, Perimeter Protection and People Counting functions. Powered by deep-learning Artificial Intelligence algorithms, it significantly improves accuracy. This series also features starlight and smart IR technology. Its IP67 rating makes it fully protected from dust and water, with an IK10 rating for vandal resistance.

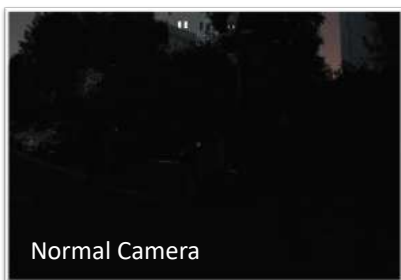
- Starlight (min. 0.003 Lux@F1.2)
- ePoE (800m long transmission)
- Face Detection (6 face attributes)
- Perimeter Protection (false alarm rate of less than 2%)

### Highlights

#### • Starlight :

For challenging low-light applications, Dahua’s Starlight Ultra-low Light Technology offers best-in-class light sensitivity, capturing colour details in low light down to 0.003 lux. The camera uses a set of optical features to balance light throughout the scene, resulting in clear images in dark environments.

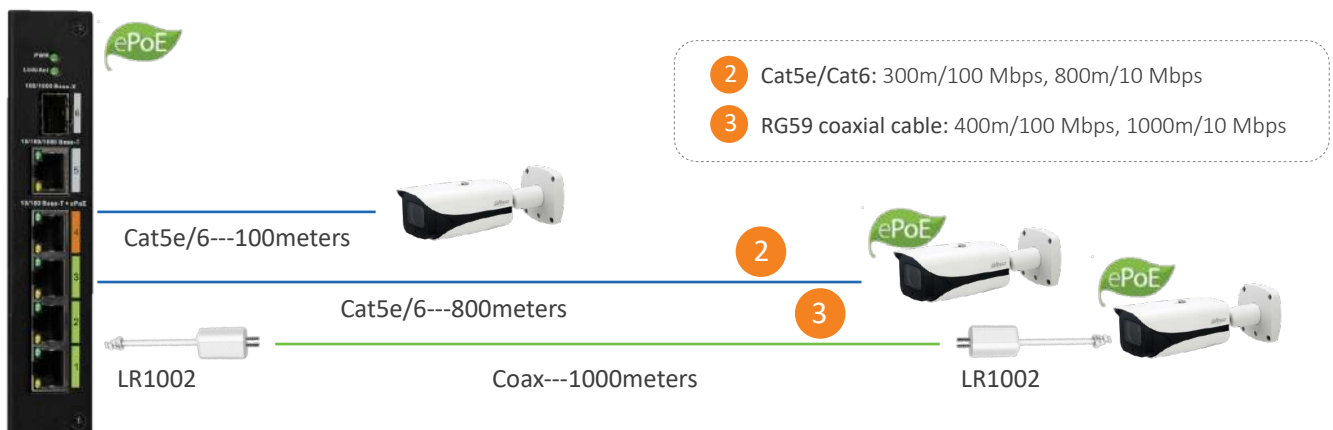
**Benefit:** Even under low illumination environments, the camera can still provide clear and full-colour video. The minimum illumination can achieve 0.003Lux@F1.2.



#### • ePoE :

Dahua ePoE technology provides a new way to accomplish long distance transmission between IP cameras and network switches. It allows a more flexible surveillance system design, improves reliability and saves on installation and wiring costs.

**Fewer switches or PoE extender, saves money and makes it easy to deploy and maintain.**



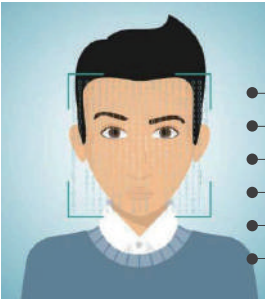
• **Face Detection :**

Dahua Face Detection technology can detect faces in the image. With a deep learning algorithm, the technology supports detecting, tracking, capturing and selecting the best face image, and provides face snapshot output.

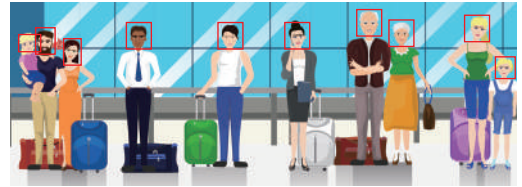
**Supports 3 kinds of capture strategies:** real-time capture, quality priority, and preferred capture.

**Supports 6 face attributes which is very useful to quickly find related people.**

6 Face Attributes



- Gender: male, female, unknown
- Glasses: no, ordinary glasses, sunglasses
- Beard: N/Y
- Age: infant, child, teenager, youth, middle-aged, old-aged
- Expression: Anger, sadness, disgust, fear, surprise, peace, joy, confusion
- Mask: N/Y



• **Perimeter Protection :**

Perimeter protection system refers to the fortifications built to either keep intruders out or to keep captives contained within the area that the boundary surrounds.

- False alarm rate of less than 2%. The rate of false alarms triggered by small animals, tree movement, shadows, and bright lights is significantly lower than traditional IVS solutions.

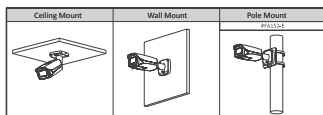
**WizMind 5 Series**



HFW5541E-ZE  
HFW5541E-Z5E

**5MP Pro AI Vari-focal IR Bullet Network Camera**

- 1/2.7" 5 Megapixel progressive scan CMOS
- H.265 & H.264 triple-stream encoding
- 20 fps@2592 × 1944, 50/60 fps@1080P (1920×1080)
- WDR (120 dB), Day/Night (ICR), 3D DNR, AWB, AGC, BLC
- ZE: 2.7 mm–13.5 mm motorized lens; Z5E: 7-35mm motorized lens
- 2/1 Alarm in/out, 1/1 audio in/out
- Max. IR LEDs Length 50 m
- Micro SD memory, IP67, IK10



**MOUNTING ACCESSORIES**

Optional:



PFA152-E Pole Mount



LR1002 ePoE Over Coax Converter





**IPC-HDBW5541E-ZE  
IPC-HDBW5541E-Z5E**

**5MP Pro AI IR Vari-focal Dome Network Camera**

- 1/2.7" 5 Megapixel progressive scan CMOS
- H.265 & H.264 triple-stream encoding
- 20 fps@2592x1944, 50/60 fps@1080P (1920x1080)
- WDR (120 dB), Day/Night (ICR), 3D DNR, AWB, AGC, BLC
- ZE: 2.7 mm–13.5 mm motorized lens; Z5E: 7-35mm motorized lens
- 1/1 Alarm in/out, 1/1 audio in/out
- Max. IR LEDs Length 40 m
- Micro SD memory, IP67, IK10

In-ceiling Mount	Junction Mount	Pole Mount
PFB210W	PFA138	PFB201C
Ceiling Mount	Wall Mount	
PFA154	PFB210W	PFB210W

**MOUNTING ACCESSORIES**

Optional:

<small>PFB210W Wall mount</small>	<small>PFA138 Junction Box</small>	<small>PFB201C In-ceiling mount</small>	<small>LR1002 ePoE Over Coax Converter</small>
<small>PFB300C Ceiling mount</small>	<small>PFA152-E Pole mount</small>	<small>PFA101 Mount adapter</small>	



**HF5842H-ZHE**

**8MP Pro AI IR Bullet Network Camera**

- 8MP, 1/1.8" CMOS image sensor, low illuminance, high image definition
- Max outputs 8MP (3840x2160) @25fps/30fps
- H.264 & H.265 coding, high compression ration
- 2.7 mm–12 mm motorized lens
- Wide dynamic, day/night, 3D noise reduction, AWB, HLC, BLC
- ROI, SVC, SMART H.264/H.265, flexible coding, applicable to various bandwidth and storage environments
- With deep learning algorithm, it supports people counting, face detection, perimeter protection
- 24V AC/PoE/12V DC power support
- Three streams for two-channel HD video
- IP67, IK10 protection grade

Pole Mount	Wall-Mount	Junction Mount
PH5842H		

**MOUNTING ACCESSORIES**

Optional:

<small>PFA154 Pole Mount</small>



**HDBW5842H-ZHE**

**8MP Pro AI IR Dome Network Camera**

- 8MP, 1/1.8" CMOS image sensor, low illuminance, high image definition
- Max outputs 8MP (3840x2160) @25fps/30fps
- H.264 & H.265 coding, high compression ration
- 2.7 mm–12 mm motorized lens
- Wide dynamic, day/night, 3D noise reduction, AWB, HLC, BLC
- ROI, SVC, SMART H.264/H.265, flexible coding, applicable to various bandwidth and storage environments
- With deep learning algorithm, it supports people counting, face detection, perimeter protection
- 24V AC/PoE/12V DC power support
- Three streams for two-channel HD video
- IP67, IK10 protection grade

Ceiling Mount	Wall Mount	Wall Mount
PFA773	PFB210W	
Wall Mount	Pole Mount	Hang Mount
PFB210W	PFB210W/PFA152-E	PFB201C/PFA101

**MOUNTING ACCESSORIES**

Optional:

<small>PFA773</small>	<small>PFB210W</small>	<small>PFA152-E</small>
<small>PFA101</small>	<small>PFB300C</small>	



# IP Camera Special Series

## Overview

Special Series offers a wide variety of products that include corner cameras and oil-repellent cameras. This series can provide suitable products for specialist industries.

- Oil-repellent Cameras (Oil-repellent glass/SMD Plus/Perimeter Protection)
- Corner Cameras (140dB WDR/Starlight+/No IR exposure / 135°,90°/People Counting/Perimeter Protection)

## Highlights


### • Oil-repellent Glass:

The glass surface is covered with a special cover. It can prevent oil or water from attaching to the surface, keeping the glass surface clean for long time.

- Oil-repellent glass reduces water drop absorption on glass surface, keeping it clean for a longer time and avoiding effects on image quality.



- Easy Installation.
- Its simple structure makes it easy to install and manage.



- Convenient cleaning.
- This material can be cleaned with just detergent and water.



### • Corner Mount:

#### Special design to mount in a corner

- More concealed, and difficult to notice
- High level of protection against violent behaviour
- Detachable front panel for easy maintenance



### • Invisible IR LED Illuminator (940 nm):

#### With 940 nm IR LED, the IR LED Illuminator of the camera is invisible to the naked eye.

- Features an efficient hidden night vision function with no human perception after night-time using infrared, giving people a relaxed environment.



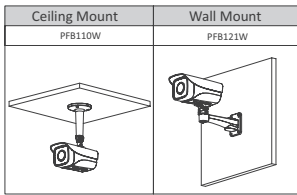
**Special Series**

**IPC-HFW3441M-AS-SFC-I2**

**4 MP AI Oil-repellent IR Fixed focal Bullet Network Camera**



- Max. 4MP (2688x1520)@30 fps
- H.265 codec, high compression rate, low bit rate
- Built-in IR LED, max. IR distance: 50 m
- ROI, SMART H.264+/H.265+, flexible coding, applicable to various bandwidth and storage environments
- Rotation mode, WDR, 3D DNR, HLC, BLC, digital watermarking, applicable to various monitoring scenes
- Intelligent detection: Intrusion, tripwire
- Alarm: 2 in, 2 out; Audio: In, out; supports max. 256 G Micro SD card
- 12V DC/PoE power support, 12V power output, max. current 165mA
- IP67 protection
- SMD Plus
- With oil-repellent feature on front glass, it supports quick detachment for washing



**MOUNTING ACCESSORIES**

Optional:

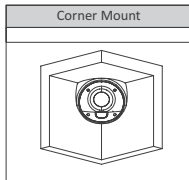
LR1002-1E7/1EC Single-port long reach ethernet over coax extender	PFM907 Integrated Mount tester	PFM114 TLC SD card



**IPC-HCBW8442**

**4MP WDR IR Corner Network Camera**

- 1/1.8" 4Megapixel progressive scan CMOS
- H.265 & H.264 triple-stream encoding
- 25/30 fps@2688x1520
- WDR (140 dB), Day/Night (ICR), 3D DNR, AWB, AGC, BLC
- 2.5 mm fixed lens, distortion correction
- 1/1 Alarm in/out, 1/1 audio in/out
- Max. IR LEDs Length 10 m
- IP67 and IK10+50J protection







# NVR & EVS

## WizMind IVSS Series

### Overview

Dahua IVSS goes beyond the ordinary NVR products. It is an Intelligent Video Surveillance Server that combines video management features with traditional video storage functions in one device. Aside from its basic functions as a network video recorder, IVSS is also integrated with modern features such as face detection and face recognition for different business and industrial applications.

With the built-in deep learning module, IVSS series products adopt video image metadata technology based on deep learning algorithms, offering high-precision human face recognition and perimeter protection. By applying deep learning artificial intelligence, IVSS allows users to focus on what matters most, to improve event response time and help make video actionable.

Its brand new UI design supports device operation and maintenance management, improving the value and viewing experience of surveillance, and serving the era of big data security.

- Face Recognition (up to 128ch, 320 faces/s, 50 databases with up to 300,000 face images)
- Perimeter Protection (up to 256ch, accuracy more than 95%)
- Metadata (up to 64ch, 6 face attributes, 7 car attributes, 6 human body attributes)
- Compatible with ANPR/Thermal Camera, etc.

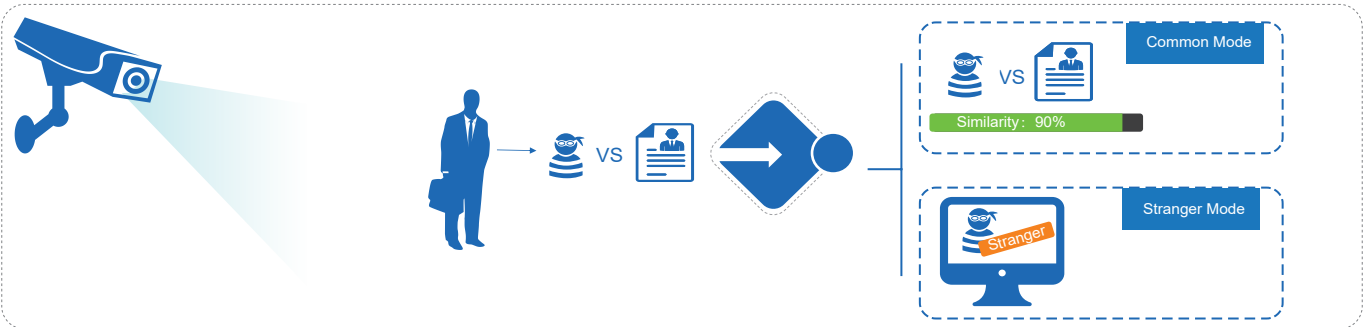
### Highlights

• **Face Recognition:**

Is a technology capable of identifying or verifying a person from a digital image or a video frame from a video source. They work by comparing selected facial features from a given image with faces within a database.

**Real-time Recognition**

- Preview and verification of people in real-time.
- Active comparison with database with alarm trigger settings.
- Supports up to 320 faces/s and 50 databases with up to 300,000 face images.



**Image Search**

- Searching using the face image function enables operators to quickly and easily search through multi-channels and within a 7-day time span, efficiently finding out when and where a person of interest appeared.
- High searching accuracy for target persons, even for those not yet included in the database by uploading face images.
- Up to 8 target face images searched at the same time.
- Supports similarity threshold set for each target face image.



**• Perimeter Protection:**

Perimeter protection system refers to the fortifications built to either keep intruders out or to keep captives contained within the area that the boundary surrounds.

**Benefit 1:**

False alarm rate of less than 2%. The rate of false alarms triggered by small animals, tree movement, shadows, and bright lights is significantly lower than traditional IVS solutions.

**Bright Light**

**Tree Movement**

**Animals**

**Benefit 2:**  
Requires 64% less pixels for recognition compared to traditional IVS solutions, allowing each perimeter protection camera to cover larger areas from farther afield.

**Traditional IVS**

- Missed alarms
- Groups of people are regarded as 1 trigger
- Distant objects are not tracked

**Perimeter protection**

- All humans & moving cars detected
- Each person is counted and tracked individually
- Distant objects can be detected

**Benefit 3:**

- Differentiates alarm trigger type into humans and vehicles.
- Rules can be set to limit different trigger types according to real requirements.

**Benefit 4:**

- Utilize “smart search” feature to quickly search video footage by trigger type of human or vehicle.
- Easy for end-users to trace historical information and analyse.

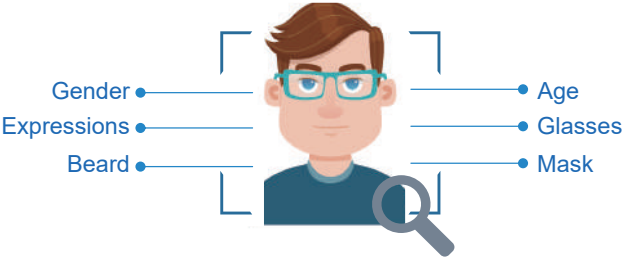


• **Metadata:**

Metadata of Face, Vehicle, Human body, and Non-motor vehicle makes it significantly easier for users to locate objects of interest.

**AI Search**

It may take 1.5-2 hours for a trained officer or analyst to review just an hour of raw video footage using traditional methods. Metadata makes search more efficient.



**WizMind IVSS Series**



**IVSS7008-1I  
IVSS7008-2I**

**2U 8HDD Intelligent Video Surveillance Server**

- Industry embedded micro-controller
- Max 400Mbps incoming bandwidth
- 128-channel IP video access
- Up to 16/32-channel perimeter protection
- Up to 8/16-channel face recognition with normal IPC
- Up to 20/40-channel face recognition with face detection IPC
- Up to 4/8-channel video metadata
- Up to 50 face databases with 300,000 face pictures in total
- Supports RAID 0/1/5/6/10
- 3 HDMI/2 VGA video output



**IVSS7016(DR)-4I  
IVSS7016(DR)-8I**

**3U 16HDD Intelligent Video Surveillance Server**

- Industry embedded micro-controller
- Max 512Mbps incoming bandwidth
- 256-channel IP video access
- Up to 64/128-channel perimeter protection
- Up to 32/64-channel face recognition with normal IPC
- Up to 80/160-channel face recognition with face detection IPC
- Up to 16/32-channel video metadata
- Up to 50 face databases with 300,000 face pictures in total
- Supports RAID 0/1/5/6/10
- SAS3.0 for storage extension
- Redundant power



**IVSS7024(DR)-8I  
IVSS7024(DR)-16I**

**4U 24HDD Intelligent Video Surveillance Server**

- Industry embedded micro-controller
- Max 512Mbps incoming bandwidth
- 256-channel IP video access
- Up to 128/256-channel perimeter protection
- Up to 64/128-channel face recognition with normal IPC
- Up to 160/256-channel face recognition with face detection IPC
- Up to 32/64-channel video metadata
- Up to 50 face databases with 300,000 face pictures in total
- Supports RAID 0/1/5/6/10
- 3 HDMI/1 VGA video output
- Redundant power

# NVR & EVS

## NVR600-4KS2 Series

### Overview

Dahua's NVR600-4KS2 series network video recorder offers unparalleled recording technology for IP video surveillance applications. For applications where details are critical for identification, this enterprise-level NVR provides a powerful Intel processor with up to 4K resolution. Additionally, the NVR features a mouse shortcut operation menu, remote management and control, central storage, edge storage, and back up storage.

This NVR is ideal for a wide range of applications such as public safety, transportation hubs, government institutions, hotel resorts, shopping centres, city centres, and financial institutions, where demand expansion flexibility, high reliability and centralized storage management is required.

The NVR is compatible with numerous third-party devices making it the perfect solution for surveillance systems with or without a video management system (VMS). Its open architecture supports multi-user access and is compatible with ONVIF 2.4, enabling interoperability when combined with 4K cameras.

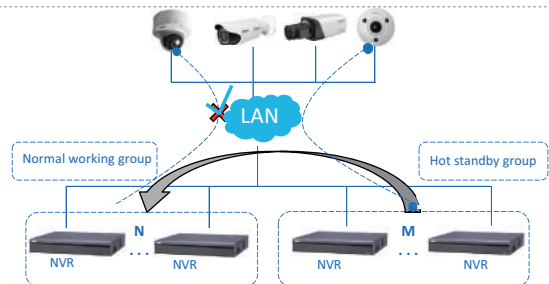
- N+M Hot Standby
- RAID 0/1/5/10
- Fisheye Dewarpping
- Compatible with ANPR/Thermal Camera etc.

### Highlights

#### • N+M Hot Standby:

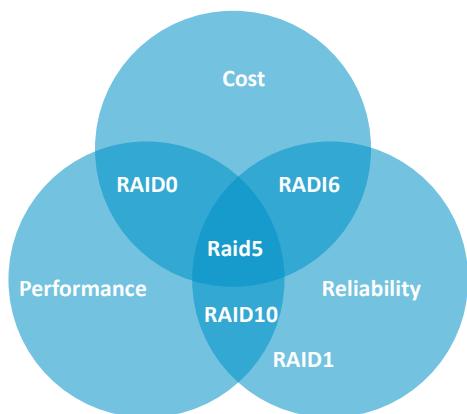
The highly reliable redundancy N+M Hot Standby design provides a secure, failover technique ensuring immediate backup. In the event of a system failure, the slave instantly takes over the master to ensure that no data is lost.

The highly reliable N+M Hot Standby redundancy design provides a secure, fail-over technique ensuring immediate backup.



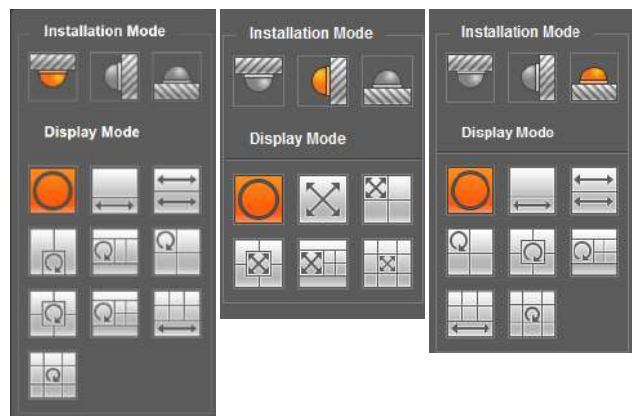
#### • RAID:

Offering a balance between storage performance, storage capacity, and data integrity, the NVR features Fruitfull RAID 0/1/5/10 for faster and safer recording.  
- Faster read/write performance; safer and more reliable



#### • Fisheye Dewarpping:

The NVR features multiple fisheye dewarpping modes to make viewing video easy whether its live or during playback.  
- Supports different dewarpping modes to view details





**NVR600-4KS2 Series**



**NVR608-32-4KS2**  
**32 Channel Ultra 4K H.265 Network Video Recorder**

- Intel Processor
- Max 32 IP Camera Inputs
- Max 384Mbps Incoming Bandwidth
- Up to 12MP Resolution for Preview and Playback
- Supports RAID 0/1/5/10
- Smart Tracking and Intelligent Video



**NVR608R-64-4KS2**  
**64Channel Ultra 4K H.265 Network Video Recorder**

- Intel Processor
- Max 64/128 IP Camera Inputs
- Max 384Mbps Incoming Bandwidth
- Up to 12MP Resolution for Preview and Playback
- Supports RAID 0/1/5/10
- Smart Tracking and Intelligent Video
- Redundant Power



**NVR616R-128-4KS2**  
**128 Channel Ultra 4K H.265 Network Video Recorder**

- Intel Processor
- Max 64/128 IP Camera Inputs
- Max 384Mbps Incoming Bandwidth
- Up to 12MP Resolution for Preview and Playback
- Supports RAID 0/1/5/10
- iSCSI and Mini SAS for Expanded Storage Space
- Smart Tracking and Intelligent Video
- Redundant Power



## NVR & EVS

### EVS Series

#### Overview

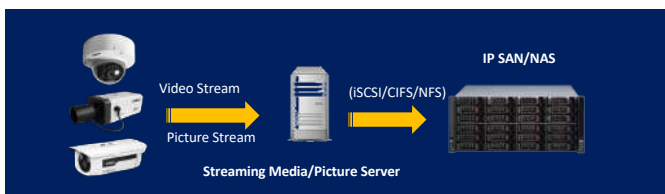
EVS is the abbreviation of Enterprise Video Server. The difference between EVS and NVR is that EVS does not have a local video output. Nevertheless, working as a professional massive storage device, it is suitable for high-end projects that needs lengthy storage and massive storage space. In addition, it also has several working modes to meet different project requirements. It is the best choice for large projects and is widely used in stadia, banks, schools, casinos, etc., where lots of cameras are needed to monitor important angles.

- Direct Storage
- Metadata Storage
- N+M Hot Standby
- Storage Extension
- RAID5
- Easy Maintenance

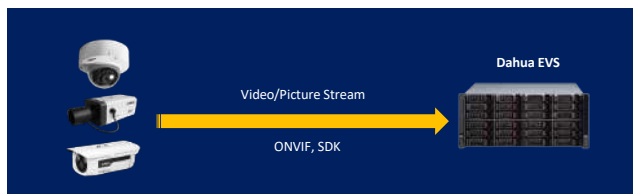
#### Highlights

##### • Direct Storage Mode:

No need for streaming media forwarding servers, simplifying system architecture and making it easier to manage with less cost.  
- No need for stream media server or picture server to forward video stream or picture stream, simplifying system topology and making it more stable and reliable.



Traditional Storage Mode

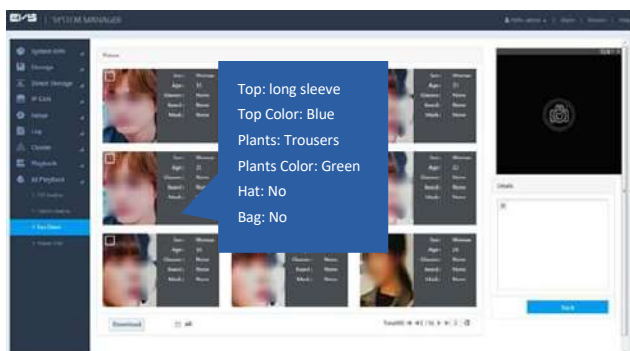


Direct Storage Mode

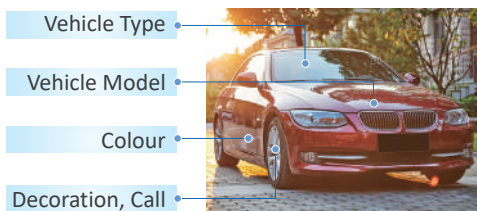
##### • Metadata Storage:

Directly store metadata of humans, vehicles and non-vehicles without the need for an intelligent server, efficiently saving costs for customers.

- VMS directly searches metadata via EVS, which speeds up the search for target objects.



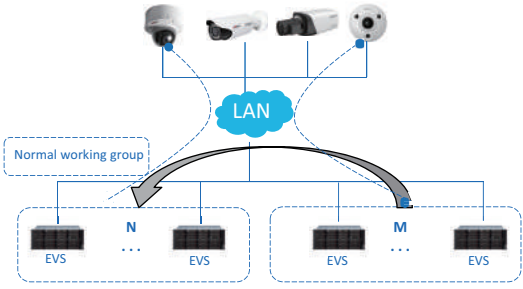
##### AI camera input, quick to search



**• N+M Fault-tolerance:**

Device level fault-tolerance, when the main device breaks down, the slave will take over.

- Device level fault tolerance. If the normal working EVS breaks down, the slave EVS will take over the operation of the master, which will take about 2 minutes.

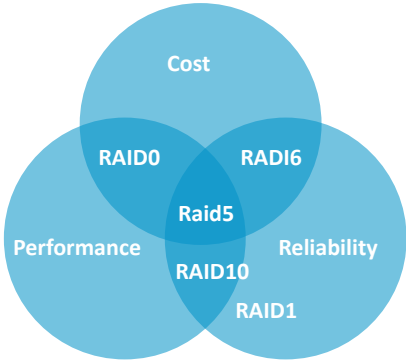


**• Raid5:**

Data will not be lost in case the hard disk fails.

- EVS supports Raid 0/1/5/6/10/50/60. This feature greatly improves the reliability of data storage. The best choice for EVS is Raid5. The figure belows shows how many HDD are needed to create Raid5 and the corresponding disk utilization efficiency.

Hdd Bay	Raid 5 Recommended Configuration	Hot Spare Hdd	Disk Utilization Efficiency
16	5+5+5	1	80%
24	9+9+5	1	83.3%
36	9+9+5+5+5	3	77.8%
48	(9+9+5)*2	2	83.3%
64	9+9+9+9+9+9	1	87.5%
72	(9+9+5)*3	3	83.3%



**• Storage Extension:**

EVS supports expansion cabinets, and can dynamically expand storage capacity when storage capacity is insufficient.

- It offers an easy to extend storage space without the need to change the system topology. It only needs ESS expansion cabinet and SAS cables.

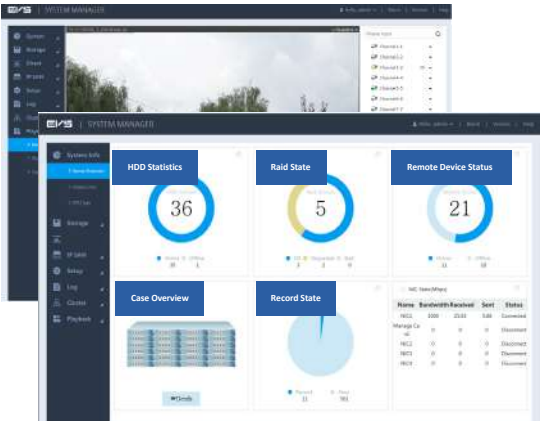
EVS Model	ESS Model
EVS5016S(-R)	N/A
EVS5024S-R	1* ESS3214S-JR , each HDD up to 8TB
EVS5036S-R	1* ESS3214S-JR , each HDD up to 8TB
EVS5048S-R	1* ESS3214S-JR , each HDD up to 8TB
EVS7024S-R	2* ESS3214S-JR , each HDD up to 8TB
EVS7048S-R	2* ESS3214S-JR , each HDD up to 8TB
EVS7024D-R	2* ESS3214D-JR , each HDD up to 8TB
EVS7048D-R	2* ESS3214D-JR , each HDD up to 8TB



**• Easy Maintenance:**

The new client design presents smarter features, making the page clearer and easier to operate.

- All system information is shown on the home page to provide easy maintenance for users.
- Clear equipment status, simple & elegant GUI design.
- Quick guide button makes it easy for users to configure basic functions.
- Direct preview on web GUI.



## EVS Series



### EVS5016S-R

#### 16-HDD Enterprise Video Storage

- Intel Processor
- Max 320 IP Camera Inputs
- Max 640 Mbps Incoming/Recording Bandwidth
- 16 HDDs, SATA, Hot-Swap
- Supports RAID 0/1/3/4/5/6/10/50/60/JBOD, Hotspare
- iSCSI and Mini SAS for Expanded Storage Space
- Supports standard iSCSI Protocol Storage
- Modular & Cableless Design
- Redundant Power



### EVS5024S-R

#### 24-HDD Enterprise Video Storage

- Intel Processor
- Max 320 IP Camera Inputs
- Max 640Mbps Incoming/recording Bandwidth
- 24 HDDs, SATA, Hot-Swap
- Supports RAID 0/1/3/4/5/6/10/50/60/JBOD, Hotspare
- iSCSI and Mini SAS for Expanded Storage Space
- Supports standard iSCSI Protocol Storage
- Modular & Cableless Design
- Redundant Power



### EVS7048D-R

#### 48-HDD Enterprise Video Storage with Dual Controller

- Intel Processor
- Dual Controller architecture
- Max 512 IP Camera Inputs
- Max 1024 Mbps Incoming/recording Bandwidth
- 48 HDDs, SAS, Hot-Swap
- Supports RAID 0/1/3/4/5/6/10/50/60/JBOD, Hotspare
- iSCSI and Mini SAS for Expanded Storage Space
- Supports standard iSCSI Protocol Storage
- Modular & Cableless Design
- Redundant Power

# WizMind PTZ

## Overview

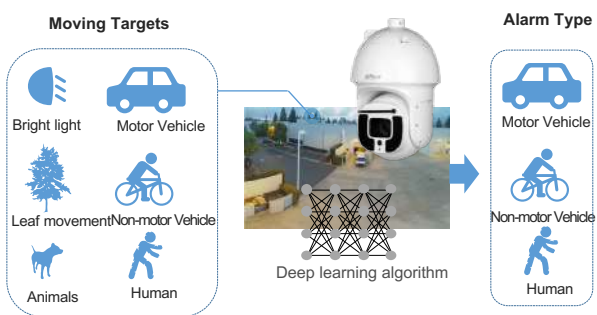
The WizMind series PTZ cameras are designed for projects with high quality and performance requirements. With high performance Sony sensors, advanced deep-learning-based AI functions, IP67 & IK10 protection, and extra-long distance IR, this series is capable of handling most application scenarios and providing the best performance.

- Perimeter Protection with Auto-tracking (false alarm rate of less than 2%)
- Smart Capture
- Metadata (27 attributes)
- Face Recognition (accuracy>99% in constraint scene)
- Smart Tracking
- PFA Technology
- OIS (50x model)
- Optical Defog
- Max. 60x optical zoom
- Super IR Range (1000m max.)
- Innovative Dual-PTZ Design
- Smart Wiper
- Wide Monitoring Range (angle of elevation: 30° for SD8A/10A, 45° for PTZ83/85)
- High-Quality Components (belt lifetime extended by 11 times)

## Highlights

### ● Perimeter Protection with Auto-tracking:

Perimeter protection based on deep learning improves alarm accuracy and reduces false alarms caused by animals, rustling leaves, bright lights, rain or snow, etc. The PTZ camera can also automatically track human or vehicle targets, which greatly improves the efficiency of PTZ tracking.



False Alarm Rate <2%



Track Humans or Vehicles Only

### ● Smart Capture:

Perimeter protection based on a deep learning improves alarm accuracy and reduces false alarms caused by animals, rustling leaves, bright lights, rain or snow, etc. The PTZ camera can also automatically track human or vehicle targets, which greatly improves the efficiency of PTZ tracking.





**• Metadata:**

Video Metadata provides attribute information extracted from a target object which can be used for data retrieval. There are four kinds of metadata supported by Dahua PTZ AI camera: human face, human body, motor vehicle and non-motor vehicle metadata.

**27 Attributes**

**Face: 6**  
**Human: 7**  
**Non-motor Vehicle: 5**  
**Motor Vehicle: 9**

Gender  
Age  
Glasses  
Mouth Mask  
Expression  
Beard

Gender  
Top Color  
Top Type  
Bottom Color  
Bottom Type  
Hat  
Bag

Car Type  
Car Color  
Cycling  
Number  
Top Color  
Top Type

Plate Color  
Car Color  
Car Type  
Sunshield  
Ornament  
Calling  
Seatbelt  
Inspection  
Sticker  
Smoke

**Application Advantage**

- Repeat Capture Rate < **10%**
- Target Capture (With Attributions) **10 Pcs/S**
- Targets Detection **100 pcs/Frame**

**• Face Recognition**

Once facial features are extracted from captured faces, they are stored in a database where they can be easily searched and compared with other images. Once a successful match is found, the system will provide a result output according to different optical zoom options, which ensures high quality image all of the time.

**Face Attributes**

- Age
- Glasses
- Mask
- Moustache&Beard
- Expression
- Gender

**Real-time Face Recognition**

**Similarity 95%**

**Accuracy Rate**

> 99%

**Constraint Scene**  
Light, angle and height are appropriate

> 90%

**Unconstraint Scene**  
People are wearing sunglasses, masks, hats or in night conditions, etc.

- Supports 5 databases
- Supports 10000 faces

**Global PTZ Camera**    **Detail PTZ Camera**

**• Smart Tracking**

The SDT5X series dual-PTZ system is very suitable for smart tracking. It can keep the global image during the tracking process, which means it will not miss any events. This is a big advantage compared with traditional single-PTZ cameras. Once the target triggers the rules in the panoramic camera (like tripwire and intrusion), the detail camera will track it automatically.



**• PFA Technology**

The PFA (Predictive Focus Algorithm) adopts Dahua's newly-developed focus algorithm, which ensures the camera image stays focused while zooming, and greatly improves the user experience and enhances product value.



Camera with PFA

Camera without PFA

**• OIS (50x model)**

OIS is short for Optical Image Stabilization. This technology can keep the image stable in a shaking environment or in a large optical zoom, making it very useful in some application scenarios. Currently, the OIS technology is only available in the 50x PTZ camera.



OIS ON

OIS OFF

**• Optical Defog**

The camera adopts an advanced optical defog IR filter based on the principle of optics. The IR filter features excellent IR transmittance which can reach to more than 98%. Utilising the optical defog IR filter and Dahua's advanced algorithm, this function can provide improved image quality in scenes affected by fog.



Optical Defog OFF

Optical Defog ON

**• Max. 60x Optical Zoom**

This series PTZ cameras can provide large optical zoom for outdoor applications with maximum optical zoom up to 60x, making it very suitable for long distance video surveillance.



1x

60x

**• Super IR Range**

This range of PTZ cameras supports long distance monitoring even at night, especially for the laser PTZ camera, it can provide up to 1000m IR distance. The camera can adjust the angle of the IR light according to the different optical zoom, which ensures a high quality image all the time.



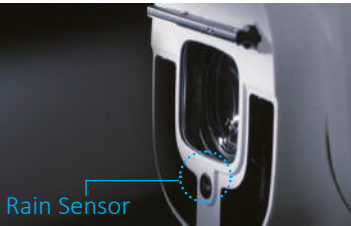
**• Innovative Dual-PTZ Design**

The SDT5X series' dual-PTZ system consists of a panoramic camera and a detail camera. These cameras can be separately adjusted, both horizontally and vertically. The panoramic camera captures panoramic images, while the PTZ camera takes detailed snapshots of objects and keeps tracking when a rule violation occurs.



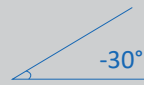
**• Smart Wiper**

Through a built-in rain sensor, Dahua's smart wiper technology senses rain and controls the wiper automatically: turns on the wiper when it rains, and turns it off when the rain stops. It offers a better surveillance experience and reduces the system's dependence on manual control.



• **Wide Monitoring Range**

The SD8A series PTZ camera supports -30°~90° large tilt angle, which provides a larger monitoring range.



• **High Quality Components**

Stepper motor and synchronous belt are the key components of a PTZ camera, and the belt is one of the weakest part when the PTZ camera is running. Dahua's R&D team have spared no effort to improve the quality of key components. Now the belt's product lifetime is increased by 11 times.



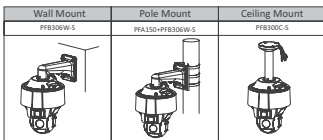
**WizMind PTZ**



2MP: SDT5X225-2F-WA  
4MP: SDT5X405-4F-WA

**Dual-PTZ AI Network Camera**

- Dual-PTZ system
- Starlight technology
- Deep-learning-based auto-tracking and perimeter protection
- Video metadata
- Smart tracking
- Supports Hi-PoE
- IP67



**MOUNTING ACCESSORIES**

Optional:



DC36V/2.23A Power Adapter



PFB306W-S Bracket



PFA150 Bracket



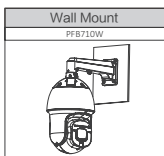
PFB300C-S Bracket



2MP: SD10A260WA-HNF

**2M 60x Starlight+ IR PTZ AI Network Camera**

- 1/1.8" 2 Megapixel CMOS
- Powerful 60x optical zoom
- Starlight+ technology
- IR distance up to 450m
- Deep-learning-based auto tracking and perimeter protection
- Supports metadata and face recognition
- Supports Hi-PoE
- Smart wiper
- IP67



**MOUNTING ACCESSORIES**

Optional:



PFB710W Wall Mount



E080-1A360223B3 Power Adapter



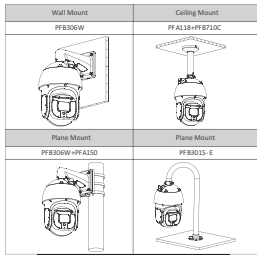
Mount Adapter



2MP: SD8A240WA-HNF  
4MP: SD8A440WA-HNF  
8MP: SD8A840WA-HNF

40x Starlight IR PTZ AI Network Camera

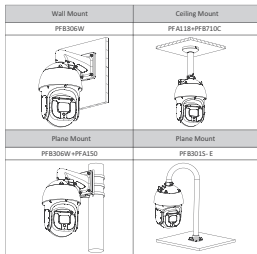
- Powerful 40x optical zoom
- Starlight technology
- Supports optical defog
- IR distance up to 500m
- Deep-learning-based auto tracking and perimeter protection
- Supports metadata and face recognition
- Supports Hi-PoE
- Smart wiper
- IP67



SD8A250WA-HNF

2MP 50x Starlight IR PTZ AI Network Camera

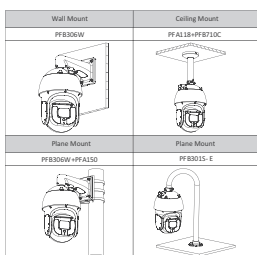
- 1/2.8" 2Megapixel CMOS
- Powerful 50x optical zoom
- Supports OIS
- Supports optical defog
- Starlight technology
- IR distance up to 500m
- Deep-learning-based auto tracking and perimeter protection
- Supports metadata and face recognition
- Supports Hi-PoE
- Smart Wiper
- IP67



SD8A820WA-HNF

4K 20x Starlight+ IR PTZ AI Network Camera

- 4/3" 8Megapixel STARVIS™ CMOS
- Powerful 20x optical zoom
- Starlight+ technology
- IR distance up to 500m
- Deep-learning-based auto tracking and perimeter protection
- Supports metadata and face recognition
- Supports Hi-PoE
- Smart wiper
- IP67



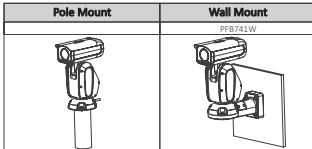




**2MP: PTZ83240-HNF-WA**  
**4MP: PTZ83440-HNF-WA**  
**8MP: PTZ83840-HNF-WA**

**40x Starlight IR AI Network Positioning System**

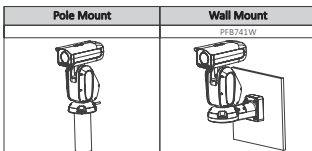
- Powerful 40x optical zoom
- Starlight technology
- Supports optical defog
- IR distance up to 400m
- Deep-learning-based auto-tracking and perimeter protection
- Supports metadata
- IP67



**PTZ85260-HNF-WA**

**2MP 60x Starlight IR AI Network Positioning System**

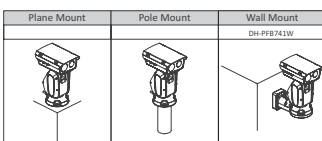
- 1/1.8" 2Megapixel CMOS
- Powerful 60x optical zoom
- Starlight technology
- Max. 25/30fps@1080P
- IR distance up to 400 m
- Deep-learning-based auto-tracking and perimeter protection
- Supports metadata
- IP67



**PTZ85260-HNF-WA-FL**

**2MP 60x Starlight Laser AI Network Positioning System**

- 1/1.8" 2Megapixel CMOS
- Powerful 60x optical zoom
- Starlight technology
- Max. 25/30 fps@1080P
- Laser distance up to 1000 m
- Deep-learning-based auto-tracking and perimeter protection
- Supports metadata
- IP67



## Anti-corrosion Products

### Overview

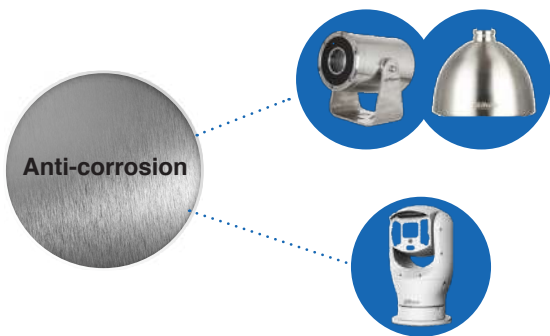
The anti-corrosion camera offers a solution for acidic or marine environments. It uses high quality 316L stainless steel or a special anti-corrosion coating to protect the camera. This range of cameras adopts high performance DSP and advanced image sensors, which enables a high-performance surveillance solution. Usually it offers IP68 rated protection for water/dust ingress and passes professional tests, which enables the camera to meet special requirements of corrosive environments such as chemical plants, ports and coastlines etc.

- Anti-corrosion Material (316L stainless steel or anti-corrosion coating)
- Starlight & WDR
- PFA Technology
- Ingress Protection: IP68/IP67

### Highlights

#### • Anti-corrosion Material:

Special 316L stainless steel or anti-corrosion coating empowers the camera in a corrosive environment.



#### 316L Stainless Steel :

- A low-carbon subtype of marine grade stainless steel
- Better anti-corrosion performance because of molybdenum more

#### Anti-corrosion Coating:

- Corrosion resistant technology
- Adopting phosphating and cathode electrophoresis technology, and then spraying antiseptic powder for 1000 hours.

#### • Strict and Professional Testing:

The cameras have passed strict and professional tests, such as sealing tests, high-low temperature tests, salt spray tests, vibration test, etc., which ensures the highest quality products.



Salt Spray Test



Package Drop Test

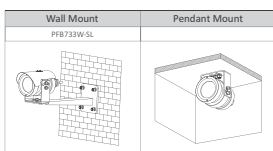


ALT Test



High-low Temperature Test

### Anti-corrosion



#### SDZW2000T-SL

#### 2MP Anti-corrosion IR Network Camera

- 1/2.8" 2Megapixel STARVIS™ CMOS
- Starlight technology
- H.265 Encoding
- Max. 50/60fps@1080P
- IVS
- IP68, IK10,
- Material: 316L stainless steel

#### MOUNTING ACCESSORIES

Optional:



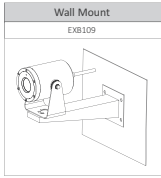
DC12V/2A  
Power Adapter



DH-PF8733W-SL  
Wall Mount



DH-HB1000  
Flexible Tube



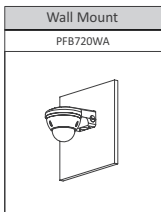
**SDZW2030U-SL**  
**2MP 30x Anti-corrosion IR Network Camera**

- 1/2.8" 2Megapixel STARVIS™ CMOS
- Powerful 30x optical zoom
- Starlight technology
- H.265 Encoding
- Max. 50/60fps@1080P
- IVS
- IP68
- Material: 316L stainless steel

**MOUNTING ACCESSORIES**

Optional:

EXB109 Wall Mount      AC24V/3A Power Adapter      DC12V/3A Power Adapter



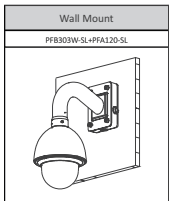
**IPC-HDBW8232E-Z-SL**  
**2MP Starlight Anti-Corrosion IR Dome Network Camera**

- 1/1.8" 2Megapixel progressive scan CMOS
- H.265&H.264 triple-stream encoding
- 50/60fps@1080P(1920x1080)
- WDR(120dB), Day/Night(ICR), 3DNR,AWB,AGC,BLC
- Multiple network monitoring: Web viewer, CMS(DSS/PSS) & DMSS
- 4.1mm ~16.4mm motorized lens
- Max. IR LEDs Length 50m
- Micro SD memory,IP67,IK10,POE+
- 316L stainless steel housing

**MOUNTING ACCESSORIES**

Optional:

PFB720WA Wall mount



**SD60230U-HNI-SL**  
**2MP 30x Anti-corrosion PTZ Network Camera**

- 1/2.8" 2Megapixel STARVIS™ CMOS
- Powerful 30x optical zoom
- Starlight technology
- H.265 Encoding
- Max. 50/60fps@1080P
- Auto-tracking and IVS
- Supports PoE+
- IP68, IK10, NEMA 4X
- Material: 316L stainless steel

**MOUNTING ACCESSORIES**

Optional:

AC 24V/3A Power Adapter      PFB303W-SL Wall Mount      PFA120-SL Junction Box



**PTZ19245U-IRB-N(-B)**  
**2MP 45x Starlight IR Network Positioning System**

- 1/2.8" 2Megapixels STARVIS™ CMOS
- Powerful 45x optical zoom
- Starlight technology
- H.265 Encoding
- Max. 50/60fps@1080P
- IR distance up to 350m
- IP68

**MOUNTING ACCESSORIES**

Optional:

AC24V/5A Power Adapter      PFB731W Wall Mount



# Explosion-proof Products

## Overview

Explosion-proof cameras are widely used in hazardous areas, where fire or explosion hazards may exist due to explosive or ignitable mixtures. The camera uses a 304/316L stainless steel housing and is specially designed to meet the strict requirements of industry standards. The remote monitoring feature allows staff to check the events without having people present in hazardous areas. The explosion-proof cameras are ideal for applications such as factories, chemical plants, oil and gas stations.

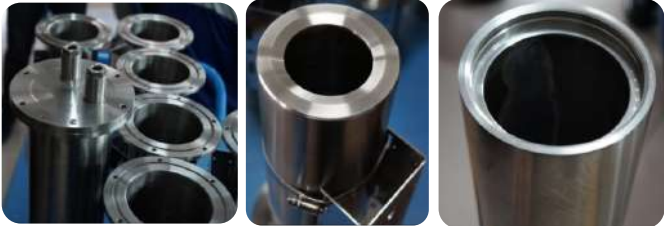
- 304/316L Stainless Steel
- 30x/45x Optical Zoom
- Starlight & WDR
- IP68 Ingress Protection
- 100m IR Distance
- ATEX & IECEx Certification

## Highlights

**• 304/316L Stainless Steel:**  
Special 316L stainless steel or anti-corrosion coating strengthens the camera in a corrosive environment.

**304 Stainless Steel (EPC230U):**  
An austenite steel, not very electrically or thermally conductive and is non-magnetic. Corrosion resistance better than regular steel and widely used because it can easily be molded into various shapes.

**316L Stainless Steel (EPC245U-PTZ, EPC245U-PTZ-IR):**  
A low-carbon subtype of marine grade stainless steel. Better anti-corrosion performance because it contains more molybdenum



- **ATEX & IECEx Certification:**
  - The ingress protection can reach up to IP68
  - The explosion-proof cameras can be used in zone 1
  - The explosion-proof level to gas can reach Ex db IIC T6 Gb
  - The explosion-proof level to dust can reach Ex tb IIIC T80°C Db

- ATEX CERTIFICATION -

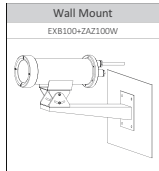


- IECEX CERTIFICATION -





Explosion-proof



EPC230U

2MP 30x Explosion-proof IR Network Camera

- 1/2.8" 2Megapixel STARVIS™ CMOS
- Powerful 30x optical zoom
- 304 stainless steel housing
- Starlight technology
- H.265 Encoding
- Max. 50/60fps@1080P
- Supports IVS
- IR distance up to 100m
- ATEX and IECEx Certification
- IP68

MOUNTING ACCESSORIES

Optional:



DH-ZAJ100W  
Mount Adapter



DH-EXB100  
Wall Mount



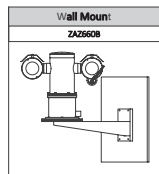
DH-ZA-JXD4  
Junction Box



DH-ZAJ300  
Junction Box



DH-GE1500  
Flexible Tube



EPC245U-PTZ-IR

2MP 45x Explosion-proof IR Network Positioning System

- 1/2.8" 2Megapixel STARVIS™ CMOS
- Powerful 45x optical zoom
- 316L stainless steel housing
- Starlight technology
- H.265/H.264 Triple-stream Encoding
- Max. 50/60fps@1080P
- IR distance up to 200m
- IP68

MOUNTING ACCESSORIES

Optional:



DH-ZAZ660B  
Wall Mount



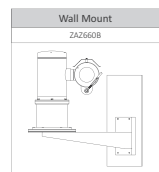
DH-ZA-JXD4  
Junction Box



DH-ZAJ300  
Junction Box



DH-GE1500  
Flexible Tube



EPC245U-PTZ

2MP 45x Explosion-proof Network Positioning System

- 1/2.8" 2Megapixel STARVIS™ CMOS
- Powerful 45x optical zoom
- 316L stainless steel housing
- Starlight technology
- H.265/H.264 Triple-stream Encoding
- Max. 50/60fps@1080P
- IP68

MOUNTING ACCESSORIES

Optional:



DH-ZAZ660B  
Wall Mount



DH-ZA-JXD4  
Junction Box



DH-ZAJ300  
Junction Box



DH-GE1500  
Flexible Tube



# WizMind Thermal

## Overview

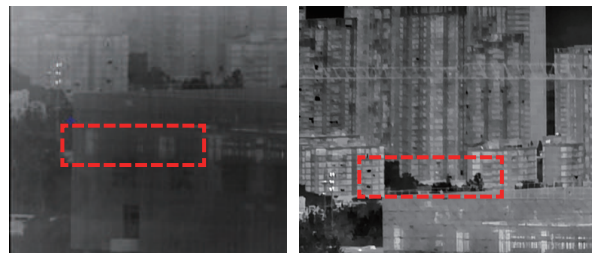
The WizMind Series thermal cameras are designed for projects with high quality and performance requirements. Together with thermal and AI technology, a rich selection of various resolutions and lens configurations, this series provides an all-in-one solution that is especially beneficial for long distance video surveillance in many outdoor applications.

- Cooled Thermal Camera Optional (max. 900mm thermal lens, 8km human recognition, 20km laser range finder)
- Perimeter Protection in all weather and at all times
- Object Classification (False alarm rate of less than 5%)
- Fire Detection (False alarm rate of less than 5%)
- Temperature Measurement (accuracy:  $\pm 2^{\circ}\text{C}$ )
- Boat Detection

## Highlights

### • Cooled Thermal Camera Option:

Dahua's thermal cooled series offers long range performance with cooled detector, which own a large format 640\*512 array. Its high sensitivity extends surveillance through darkness, distance, and especially bad weather conditions, guaranteeing a 24/7 operation. Compared to uncooled thermal cameras, its picture quality is much better.



### • Perimeter Protection in all weather and at all times:

- Simple background, with less false alarms

- Even in rainy, foggy or hazy days, the thermal camera can always provide clear images.



Visible Image

Thermal Image



Visible Image

Thermal Image

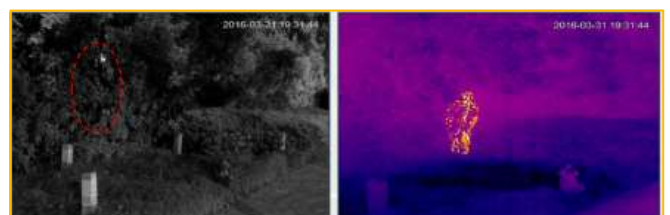
- The thermal camera can provide 24/7 effective surveillance in both day and night.

- The thermal camera only receives infrared radiation, which enables it to recognize the hidden target in some complex environments.



Visible Image

Thermal Image



Visible Image

Thermal Image

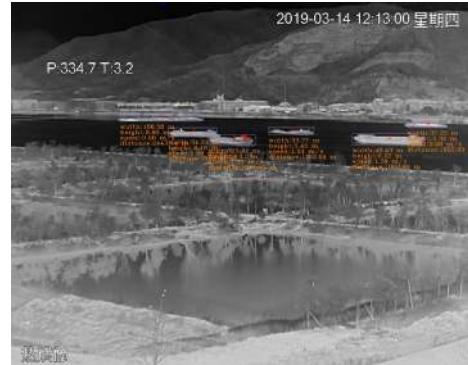
• **Object Classification:**

Deep-learning-based algorithms enable the thermal camera to not only filter false alarms to achieve a higher accuracy, but also supports object classification.



• **Boat Detection:**

Dahua thermal cameras (TPC-PT8x21C, TPC-PT8x2A) can support boat detection, which is very useful in water traffic management and in some areas that need to control boat entry.



• **Temperature Measurement:**

Dahua thermal cameras (-T models) provide remote temperature monitoring functionality with the ability to set temperature threshold alarms. Object temperatures can be monitored in daytime or at night, making them ideal for usage in power plant or oil extraction applications where overheating can be dangerous. When the temperature exceeds the set threshold, an alarm is triggered. The temperature range is between -20 °C to 550 °C.



Fire was detected and alarm signal was sent

• **Fire Detection:**

With built-in fire detection functionality, the camera has the ability to detect fires from long range. Because thermal cameras are sensitive to temperature, they provide higher fire detection accuracy than ordinary cameras, making them particularly suitable for applications such as forest fire prevention.

**WizMind Thermal**



**TPC-PT9621C**

**Thermal Network Long-Range Hybrid PTZ Camera**

- 640x512 cooled MCT FPA
- 1/2.8" 2 megapixel progressive scan CMOS
- Powerful optical zoom lens (thermal & visible)
- Optional thermal lens: 20~300mm, 50~450mm, 90-900mm
- Optional visible light lens: 6.6~330mm, 12.5~750mm
- Laser range finder
- Micro SD memory (optional)
- IP66



640×512: TPC-PT8621A  
400×300: TPC-PT8421A

**Thermal Network Hybrid Pan & Tilt Camera**

- 640×512/400×300 VOx uncooled thermal sensor technology
- Athermalized lens (thermal), focus-free
- 1/2.8" 2 megapixel progressive scan CMOS
- Supports detection and alarm for fire and smog
- Max 140°/s pan speed, 360° endless pan rotation
- Up to 300 presets, 5 auto scans, 8 tours, 5 patterns
- 7/2 alarm in/out
- Micro SD memory, IP66



640×512: TPC-SD8621-T  
400×300: TPC-SD8421

**Thermal Network Hybrid Speed Dome**

- 640×512/400×300 uncooled VOx thermal sensor technology
- Athermalized lens (thermal), focus-free
- 1/2.8" 2 megapixel progressive scan CMOS
- Supports detection and alarm for fire and smog
- Max 140°/s pan speed, 360° endless pan rotation
- Up to 300 presets, 5 auto scans, 8 tours, 5 patterns
- 7/2 alarm in/out
- Micro SD memory, IP66
- Supports temperature measurement ("-T" model)

Corner Mount	Corner Mount
PFB303W+PFA151	PFB303W+PFA120+PFA151
Pole Mount	Pole Mount
PFB303W+PFA150	PFB303W+PFA120+PFA150
Hang Mount	
PFB300C	

MOUNTING ACCESSORIES

Optional:



640×512: TPC-BF5601-T  
400×300: TPC-BF5401

**Thermal Network Bullet Camera**

- 640×512/ 400×300 uncooled VOx thermal sensor technology
- Athermalized lens (thermal), focus-free
- Supports fire detection & alarm
- Various lens options
- 2/2 alarm in/out
- Micro SD memory, IP67, PoE, ePoE
- Supports temperature measurement ("-T" model)

Wall Mount	Corner Mount	Pole Mount
PFA121	PFA121+PFA151	PFA121+PFA150

MOUNTING ACCESSORIES

Optional:



# Transmission Switch

## Overview

- Highly Reliable Components (power, switch chip, PSE chip)
- Non-blocking Video Transmission
- Industrial-grade Design
- Video Pressure Test
- Security

## Highlights

- Highly Reliable Components (power, switch chip, PSE chip):

### For Example:

- Long Distance PoE Transmission- Dual Power Supply

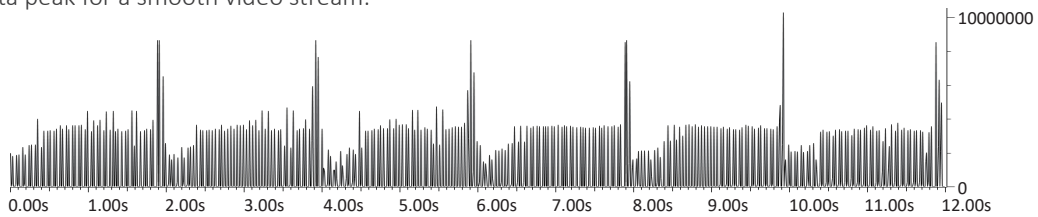
	IEEE	E100	E10
IP Camera	unlimited	ePoE IPC	ePoE IPC
Bandwidth(Mbps)	100	100	10
Distance(max)	100m	300m	800m

PFS4210-8GT-DP & PFS4410-6GT-DP

- Dual Power Supply
- 2 \* RS485
- 2 \* 1000M Base-X
- 6 \* 10/100/100 Base-T PoE+/PoE
- 2 \* 10/100/100 Base-T Hi-PoE/PoE+/PoE
- L2 Managed Industrial PoE Switch
- Fully-sealed and Dustproof Design
- Non-blocking Video Transmission
- Wide Working Temperature: -40°C~+75°C
- Lightning Protection up to level 4

### • Non-blocking Video Transmission:

Video stream characteristic is different from the ordinary stream. Sudden increase of video stream brings high pressure to the data forwarding of switch. The flow control function of Dahua's switch is enabled by default, and a large hardware buffer eases the sudden data peak for a smooth video stream.



### • Industrial-grade Design:

Dahua's switches are designed to work under extreme environments, such as wide temperature ranges and lightning environments. Dahua's switches can reach lightning protection level 3. Accelerated Life Testing (ALT) is performed to ensure high reliability and a long product lifetime.

### • Video Pressure Test:

It is an important feature of how a switch can handle large amounts of video streams in video surveillance. Rich experience in video surveillance has enabled Dahua to design and manufacture the best switches for video surveillance. At the same time, Dahua's switches have passed the high video pressure test in minimal 200 IP camera test environments which demonstrates high product reliability.

### • Security:

Dahua switches are capable of realising control upon access device and avoiding network intrusion via 802.1X, MAC Binding and MAC filter. Moreover, Dahua switches are equipped with a power management mechanism, which guarantees the power supply of high-priority ports and also protects the switch from being damaged.



## Switch



### Core Switch DH-S7606

#### High-end Multiservice Routing Switches

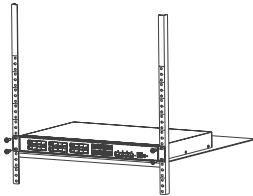
- Uses the Intelligent Resilient Framework 2 (IRF2) as the system foundation of the virtualization software system
- Supports technologies required by cloud data centers, for example, TRILL, EVB, and FCoE
- Fully compatible with 40GE and 100GE Ethernet standards
- Integrates multiple network services such as IPv6, network security, wireless control, and passive optical networks



### Aggregation Switch DH-PFS5936-24GF8GT4XF

#### L2+ Managed Switch

- Supports 24 100/1000 Mbps and 4 1/10 Gbps fiber ports, 8 10/100/1000 Mbps Ethernet ports
- Supports VLAN and port aggregation
- Supports STP, RSTP, MSTP and ERPS
- Supports Web, CLI and SNMP management



### Non-PoE Access Switch DH-PFS3024-24GT

#### 24-Port Gigabit Switch (Unmanaged)

- Layer 2 unmanaged access switch
- All gigabit Ethernet ports
- Lightning protection
- Plug and play
- Adopts metal enclosure
- Good heat dissipation



### ePoE Switch LR2218-16ET-240

#### 16-Port PoE Switch with 8-Port ePoE

- Supports long distance PoE transmission up to 800m with ePoE technology
- Layer-two web managed ePoE switch
- Port 1-8 support three self-adaptive transmission modes which are IEEE, E100 and E10
- Port 1-8 support both twisted-pair transmission and coaxial cable transmission
- Supports web management: port management, 802.1Q VLAN, STP/RSTP, LACP, 802.1X, QoS
- Supports PoE management, Green PoE, Legacy Support
- Compliant with IEEE802.3, IEEE802.3u, IEEE802.3ab/z and IEEE802.3X standards



### ePoE Switch LR2110-8ET-120

#### 8-Port ePoE Switch

- Supports long distance PoE transmission up to 800m with ePoE technology
- Layer-two ePoE switch
- MAC auto study and aging, MAC address list capacity is 8K
- Compliant with IEEE802.3, IEEE802.3u, IEEE802.3ab/z and IEEE802.3X standards
- Supports IEEE802.3af, IEEE802.3at, Hi-PoE standard
- Industrial wide temperature design
- Port indicator light to display the status of current transmission mode for the port, which includes IEEE, E100 and E10



### All-giga PoE Switch PFS4226-24GT-240 PFS4226-24GT-360

#### 24-Port PoE Gigabit Managed Switch

- Layer 2 network management PoE switch
- Supports IEEE802.3af, IEEE802.3at standard
- Supports Hi-PoE 60W
- Network Redundancy: STP/RSTP/MSTP
- Supports IPv4/IPv6, and DHCP
- Network management based on SNMP
- Configuration: Web, Telnet, CLI Command
- QoS (IEEE802.1p/1Q), CoS/ToS to Increase Determinism
- Enhanced Network Security with IEEE802.1X, SNMP v1/v2c/v3, HTTPS, and SSH/SSL
- Large data cache(4M), real-time transmission
- MAC auto study and aging, MAC address list capacity is 8K
- EMC high protection design



### All-giga PoE Switch PFS4218-16GT-190 PFS4218-16GT-240

#### 16-Port PoE Gigabit Managed Switch

- Layer 2 network management PoE switch
- Supports IEEE802.3af, IEEE802.3at standard
- Supports Hi-PoE 60W
- Network Redundancy: STP/RSTP/MSTP
- Supports IPv4/IPv6, and DHCP
- Network management based on SNMP
- Configuration: Web, Telnet, CLI Command
- QoS (IEEE802.1p/1Q), CoS/ToS to Increase Determinism
- Enhanced Network Security with IEEE802.1X, SNMP v1/v2c/v3, HTTPS, and SSH/SSL
- Large data cache(4M), real-time transmission
- MAC auto study and aging, MAC address list capacity is 8K
- EMC high protection design



**All-giga PoE Switch**  
**PFS4212-8GT-96**



**12-Port Managed Desktop Gigabit Switch with 8-Port PoE**

- Layer 2 network management PoE switch
- Network redundancy: STP/RSTP/MSTP
- Network management based on SNMP
- IEEE802.3af, IEEE802.3at standard and Hi-PoE 60W
- Large data buffer up to 4 MB, real-time transmission
- MAC auto study and aging, and MAC address list capacity is 8K
- Meet Class B Electromagnetic Compatibility Standard

**Industrial PoE Switch**  
**DH-PFS4210-8GT-DP**



**10-Port Gigabit Industrial Switch with 8-Port Gigabit PoE (Managed)**

- Layer 2 managed industrial PoE switch
- Supports IEEE802.3af/at and Hi-PoE (60W) standard
- Supports STP/RSTP/MSTP for network redundancy
- Supports rich L2 features including VLAN, Link Aggregation, IGMP Snooping, ROMN, ACL, QoS, etc
- Supports Web, SNMP and CLI management
- IP40 full metal enclosure, fully-sealed and dustproof design
- Dual power input for power redundancy
- Wide working temperature: -40~+75°C

# Transmission

## Wireless Transmission

### Overview

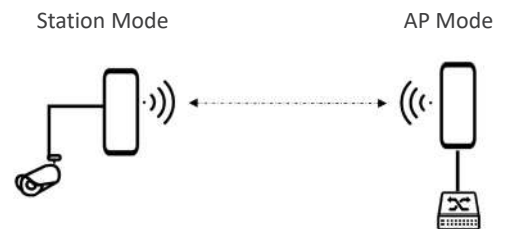
- Integrated Professional Surge Protection
- Multi-language
- Free Management Platform-DWMS
- Point-to-point, Point-to-multi-point, Back-to-back Applications
- Cost-effective
- Easy Installation and Configuration

### Highlights

#### • Point to Point:

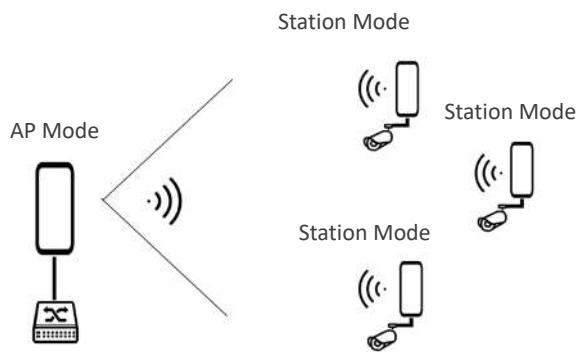
2 CPE are recommended for PTP connections, as it's more cost-effective, one is configured as AP mode and the other as Station mode.

\* Every directional AP or CPE is able to realize PTP connection as they all supports both AP and Client mode.



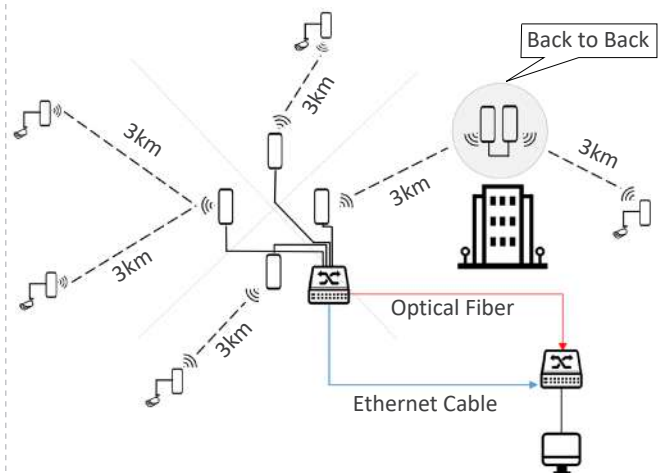
#### • Point to Multi-point:

For PTMP connections, usually we recommend 1 Base Station, which has a wider wireless angle and higher capacity, working on AP mode, plus several CPEs as Station working on Station Mode.



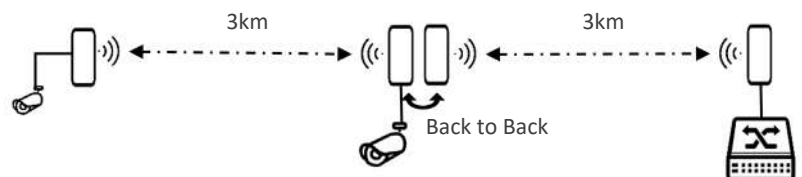
\* Base Station is usually with wider wireless angle & higher capacity.

#### • Typical Application Scenario



#### • Back to Back:

It's suitable for those areas where there is an obstacle such as a building between Client and AP, in which the client device can't directly transmit the data to center AP. Back to Back deployment provides a method to adjust the angle, which makes it ideal for such a scenario.



**• Cost-effective:**

In some scenarios, it's difficult or even impossible to deploy cables. In addition, cabling and installation is costly and time consuming.

Wireless Bridges are designed to solve such issues. It requires no cabling for transmission and offers easy installation, saving lots of time and cost for customers.



Rural Areas



Mining



Construction Sites



Energy Transportation

Wireless Method



No Cabling



Economical



Flexible



Ease of Use

**Wireless Transmission**



**DH-PFWB5-90ac**

**5GHz AC867 18dBi Outdoor Base Station**

- Integrated 5 GHz (2x2) MIMO radio
- Frequency 5.150- 5.850 GHz (FCC 5.150- 5.250 and 5.725- 5.850 GHz)
- High performance and stability
- IP-66 standard rated enclosure
- Improved noise immunity
- TDMA ensures reliable communication
- Powerful OS
- Dual firmware
- Built-in tools including Site Survey, Link Test, Antenna Alignment, Spectrum Analyzer, Ping & Trace help in configuration and debugging
- Recommended for 0~5km PTP/PTMP wireless connection (as a station in PTMP link)



**DH-PFWB5-30ac**

**5GHz AC867 15dBi Outdoor Wireless CPE**

- Integrated 5 GHz (2x2) MIMO radio
- Frequency 5.150- 5.850 GHz (FCC 5.150- 5.250 and 5.725- 5.850 GHz)
- High performance and stability
- IP-66 standard rated enclosure
- Improved noise immunity
- TDMA ensures reliable communication
- Powerful OS
- Dual firmware
- Built-in tools including Site Survey, Link Test, Antenna Alignment, Spectrum Analyzer, Ping & Trace help in configuration and debugging
- Recommended for 0~3km PTP/PTMP wireless connection (as a station in PTMP link)





## DH-PFWB5-90n

### 5GHz N300 Outdoor Wireless Base Station

- Integrated 5 GHz (2x2) MIMO radio
- Frequency 5.150- 5.850 GHz (FCC 5.150- 5.250 and 5.725- 5.850 GHz)
- High performance and stability
- IP-66 standard rated enclosure
- Improved noise immunity
- TDMA ensures reliable communication
- Powerful OS
- Dual firmware
- Built-in tools including Site Survey, Link Test, Antenna Alignment, Spectrum Analyzer, Ping & Trace help in configuration and debugging
- Recommended as Base Station for 0~5km PTMP wireless connection



## DH-PFWB5-30n

### 5GHz N300 15dBi Outdoor Wireless CPE

- Integrated 5 GHz (2x2) MIMO radio
- Frequency 5.150- 5.850 GHz (FCC 5.150- 5.250 and 5.725- 5.850 GHz)
- Miniaturized design
- High performance and stability
- IP-65 standard rated enclosure
- Improved noise immunity
- TDMA ensures reliable communication
- Powerful OS
- Dual firmware
- Built-in tools including Site Survey, Link Test, Antenna Alignment, Spectrum Analyzer, Ping & Trace help in configuration and debugging
- Recommended for 0~3km PTP/PTMP wireless connection (as a station in PTMP link)



# Display & Control Monitor

## Overview

- HDMI + USB + Audio + RJ45 + Speaker + Physical Button + Remote controller
- 4K Ultra-HD resolution
- Android OS, RAM: 1GB, Internal Storage: 8GB
- Light and cost-effective plastic housing
- 178°/178° wide viewing angle
- High fidelity digital processing, brilliant and vivid video
- Low energy consumption



## Monitor



- DHI-LM55-F410
- DHI-LM50-F410
- DHI-LM43-F410
- DHI-LM27-F410

### 55/50/43" UHD LED Monitor

- 4K Ultra-HD resolution
- 1.07G colors, for a realistic and immersive visual experience
- High fidelity digital processing for a brilliant and vivid video
- 178°/178° extra-wide viewing angle for overall viewing performance
- Professional thermal design to extend equipment lifespan
- Built-in power, low energy consumption

## Display & Control

### Video Wall

#### Overview

- Variety of sizes, bezel widths, resolution and brightness to select, has competitive advantages in product and technology
- Industrial level LCD panel, suitable for 24/7 operation
- Has pioneered the method of modular stacking installation that supports front and rear maintenance which is patent protected
- Multiple Application Scenarios
- Powerful video-wall management controller makes flexible image displays, supports screen multi-segmentation, splicing, image roaming and PIP etc.

#### Video Wall



#### DHL460UDM-ES DHL550UDM-ES

##### 55/46" FHD Video Wall Display Unit (Ultra Narrow Bezel 1.7mm)

- Industrial level PVA LCD panel, suitable for extensive 24/7 continuous operation
- Ultra-narrow 1.7mm bezel-to bezel design (1.15mm bezel on the left and top sides and 0.55mm bezel on the right and bottom sides)
- High contrast ratio and high brightness greatly enhances the video layering, and present the details of the video
- High fidelity digital processing for brilliant and vivid video
- Built-in 3D COMB filter and 3D noise reduction
- Wide array of connectivity options HDMI, DVI, VGA, BNC, RS232, USB, Audio (for DHL460UDM-ES)
- Infrared, RS232 dual mode, supports remote PC control
- Professional thermal design to extend equipment lifespan
- Built-in power, low energy consumption, ultra-quiet
- Fast stack installation, professional project design, supports arc-shaped mounting
- Widely used in surveillance center, dispatching platform, safe city, commercial display, etc.



#### LS460UCM-EF LS490UCM-EF LS550UCM-EF

##### 46/49/55" FHD Video Wall Display Unit (Ultra Narrow Bezel 3.5mm)

- Industrial level ADS LCD panel, suitable for extensive 24/7 continuous operation
- Ultra-narrow 3.5mm bezel-to bezel design (2.3mm bezel on the left and top sides and 1.2mm bezel on the right and bottom sides)
- High contrast ratio and high brightness greatly enhance the video layering, and present the details of the video
- High fidelity digital processing, brilliant and vivid video
- Built-in 3D COMB filter and 3D Noise Reduction
- Abundant interfaces HDMI, DVI, VGA, BNC, USB, supports video loop
- Built-in picture splicing function
- Infrared, RS232 dual mode, supports remote PC control
- Professional thermal design to extend equipment lifespan
- Built-in power, low energy consumption, ultra-quiet
- Fast stack installation, professional project design, supports arc-shaped mounting
- Widely used in surveillance center, dispatching platform, safe city, commercial display, etc.



# Display & Control

## Digital Signage

### Overview

- Variety of product series to select, has competitive advantages in product and solution
- Powerful media publishing system for all devices unified remote management via web
  - Supports three programme publishing modes: network publishing, import by USB disk, USB player (device)
  - Supports programme and scrolling marquee creation, editing, scheduling and publishing
  - Supports device information, status display and system controlling
  - Supports content files uploading, saving and classifying
  - Supports device online/offline, programme playing, downloading, statistical report
  - Network security: protocol encryption, password protection, black/white list
- Provide efficient global control, one-stop management
- Multi-screen display and rich advertising material, improve operation effect

### Digital Signage



LDV43-SAI200  
LDV49-SAI200  
LDV55-SAI200

#### 43/49/55" Floor Standing Digital Signage

- High quality panel, industrial-grade design, full metal casing, 5mm tempered protective glass
- Supports picture, audio, video, PDF, IPC stream, time, weather, etc.
- MPS platform provides unified remote management for system integrators and media operators
- Strong 4 core processor provides powerful decoding capabilities, enabling premium display performance
- Built-in media player software and USB player provide multiple methods to play contents



LDH32-TAI200  
LDH43-TAI200  
LDH49-TAI200  
LDH55-TAI200

#### 32/43/49/55" Indoor Wall-mounted Digital Signage

- Abundant interfaces including HDMI, VGA, USB, SD card, RS232
- Supports picture, audio, video, marquee, time, webpage, multiple materials editing
- Built-in media player software and USB player to provide multiple methods to play contents
- 178°H/178°V extra-wide viewing angle for overall viewing performance
- High performance and efficient advertising spread bring you unlimited business opportunities



### DPB18-AI

#### Distributed Display and Control Android Player Box

- Industrial design, small and portable, matching monitor, video wall, LED screen for advertising
- 4 function modules include network release, local release, app manager and system settings
- Supports video, picture, audio, txt, PDF, IPC stream, time, weather and other multimedia information released, made for advertising industry
- Supports the programme material of the network or outage resume function, greatly save bandwidth and network flux
- MPS platform provides a unified remote management for system integrators and media operators



### DH-LU65-LT400

### DH-LU75-LT400

### DH-LU86-LT400

#### 65/75/86" Ultra-HD Display

- Aluminum housing, 4mm thick fully tempered glass
- Build-in Android system and optional Windows system
- Detachable type design, PC module and display are separated
- IR (Infrared Ray) touch technology, supports 10 points writing and 10 points touch
- Screen sharing, ideal for presentations
- Rich interface, plug-and-play





# Display & Control

## LED Screen

### Overview

- Indoor Pixel LED
- Outdoor Fixed Pixel LED
- Indoor & Outdoor Rental LED


### Highlights

#### Indoor Pixel LED

Only **0.1mm** join between two LED cabinets

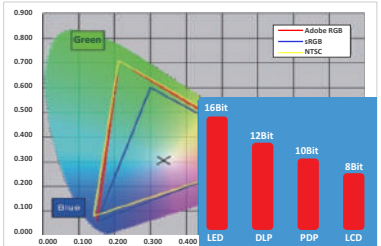


Seamless Splicing For Any Size Screen

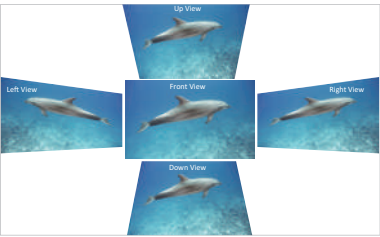


DLP 30-40dB (A)  
LCD PDP 25-30dB (A)  
LED 0dB (A)

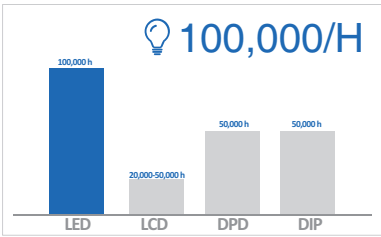
Work Without Noise



High Color Gamut



Wide Viewing Angle



Max.100,000 Hours Lifespan



Ultra Thin & Light Cabinet

#### Outdoor Fixed Pixel LED



12-14 Bits RGB Colour



24x7 Operation




High Brightness, P16 Reaches 7500 cd/m<sup>2</sup>



Front IP 65 Protection


#### Indoor & Outdoor Rental LED:

- High-end rental LED display
- Modular designed cabinet
- Fast lock provides quick servicing
- Front/Rear service options
- Ultra-thin cabinet for wall mounted installation
- 500mm×500mm (1:1) size cabinet



**Module Design**

- 500mm×500mm cabinet
- Module + Power + Cabinet housing
- Different pixel models can be exchanged



**Fast Installation**

- Magnetic suction or snap connection fixing, no screws required, the installation process does not require any tools



**Lock Design**

Single person handling via fast lock cabinet design



**Integrated Connection**

The number of effective plugging up to 100,000 times



**Front Maintenance**

Module and power completely maintained via the front

**LED Screen**



**PHSA1.2-MH**

**Indoor High End Small Pixel Pitch LED**

- Bezel-free native 1080P, 4K and customized resolution LED video wall system
- Ultimate visual performance with 16 bit grey scale, 3000~7200Hz refresh rate and 7000:1 contrast ratio
- 24/7 reliability, at least 80,000 hours of product lifespan
- Dot by dot calibration ensures excellent colour and brightness uniformity
- Low power consumption, environmentally friendly
- Natural heat dissipation mechanism enables fan-less design that eliminates noise



**PHSA1.4-MH**

**Indoor Fine Pixel LED**

- Leading technology of high grey level and low brightness, high contrast ratio 8000:1, processing depth 16bit, refresh rate 7200Hz
- Wide colour range, excellent colour uniformity, no rainbow effect, strong broadcasting stability
- Seamless, bezel-free, size-free splicing with adjusting accuracy of 0.01mm
- Metal cooling structure, no noise and no fan
- Die-casting aluminum design, CNC precise processing
- Modular front maintenance that supports hot plugging for unit module and wires



**PHSA1.6-SH**

**Indoor Fine Pixel LED**

- Bezel-free native 1080P, 4K and customized resolution LED video wall system
- Ultimate visual performance with 14 bit grey scale, 1920 Hz refresh rate and 3000:1 contrast ratio
- 24/7 reliability, 50,000 hours of product lifespan at least
- Dot by dot calibration ensures excellent color and brightness uniformity
- Low power consumption, environmentally friendly
- Natural heat dissipation mechanism enables fan-less design that eliminates noise
- PHSA1.6-EH and PHSA1.6-SH adopt different LED package



**PHSA2.5-SH**  
**Indoor Fine Pixel LED**

- Bezel-free native 1080P, 4K and customized resolution LED video wall system
- Ultimate visual performance with 16 bit grey scale, 1920 Hz refresh rate and 3000:1 contrast ratio
- 24/7 reliability, 100,000 hours of product lifespan at least
- Dot by dot calibration ensures excellent color and brightness uniformity
- Low power consumption, environmentally friendly
- Natural heat dissipation mechanism enables fan-less design that eliminates noise
- PHSA2.5-EH and PHSA2.5-SH adopt different LED package



**PHOA6-EH**  
**PHOA8-EH**  
**PHOA10-EH**  
**PHOA16-EH**  
**Outdoor Fixed LED**

- Innovative quick disconnected latch for module and control box can be installed/uninstalled within 5 seconds from front and back, allowing instant replacement and easy maintainance
- Ultra-light and thin, saving transportation and labour costs
- Mounted on the wall with only simple square steel for fixing, saving cost and time for the installation



**PHRIA3.91-SH**  
**PHRIA4.81-SH**  
**Indoor Rental LED**

- The precision of die-casting aluminum cabinet splicing seam is less than 0.1mm
- Special, adjustable locks achieve fast installation and uninstallation
- Fanless design comes from superior heat dissipation
- Good grey scale even at low brightness, brings profound levels and abundant colours



**PHROA3.91-SH**  
**PHROA4.81-SH**  
**Outdoor Rental LED**

- The precision of die-casting aluminum cabinet splicing seam is less than 0.1mm
- Special, adjustable locks achieve fast installation and uninstallation
- IP65 protection achieves stable outdoor performance
- Fanless design comes from superior heat dissipation
- Good grey scale even at low brightness, brings profound levels and abundant colours

## Display & Control Controller

### Overview

- Variety of product series to select from, has competitive advantages in product and solution
- Powerful video-wall management controller makes flexible image display, and supports screen multi-segmentation, splicing, image roaming, PIP, etc.
- Powerful encoding and decoding capacity (4K & H.265 & H.265+)
- Compatible with devices from brands like Private, Hikvision, Onvif, RTSP protocol
- Provides SDK and technical support for third-party docking
- Multiple control modes, intuitive and convenient

### Controller



#### M70-4U-E

##### Multi-service Video Management Platform

- 19" standard 4U ATCA industry box
- Easy and flexible configuration with pluggable card module design
- 80ch@1080P or 320ch@D1 signal encoding (fully configured)
- 80ch@4K or 320ch@1080P or 720ch@720P or 1280ch@D1 signal decoding (fully configured)
- Supports 320ch@1080P H.265 signal decoding (fully configured)
- Supports 240@D1 nonstandard stream signal decoding (fully configured)
- Supports max 60 screens splicing
- Supports analog/digital video signals input and matrix output
- Supports SD/HD video signal matrix switch and output
- Supports non-compressed digital signal encoding output
- 6 RJ-45 gigabit network ports for matrix control, preview and online central storage
- Supports TCP/IP/RTP/RTSP/RTCP/TCP/UDP/DHCP/PPPoE and etc. network protocols
- Remote cast analog/digital video onto the video-wall
- Remote reboot/upgrade/default setting, and other operations
- Supports VGA automatic signal adjustment



#### NKB5000

##### HD Network Control Keyboard

- Keyboard to Control
- Standalone DVR
- (Network) High Speed Dome
- High Speed Dome
- Central Management Platform
- Network Video Server
- RS232, RS485 & Network Connections (Wi-Fi)
- Four Dimensional Joystick Control of PTZ Functions
- Supports 4K decoding live view
- Supports 4CH HDMI output
- Supports snapshot and recording to U-disk
- Supports Video-Wall display control
- Preset Position, Auto Scan, Auto Pan, Auto Tour & Pattern Control
- NKB5000-F model includes an extension keypad module



### NVD0905DH-4I-4K

#### Ultra-HD Network Video Decoder

- Designed for standalone operator viewers
- H.265+/H.265/H.264/MJPEG/MPEG4/MPEG2 video decoding
- Ultra-high decoding ability, up to 12MP
- 2ch HDMI and 2ch DVI-I input, 9ch HDMI output
- Supports 1/4/9/16 display split
- Supports audio, alarm, bi-directional talk, RS485
- Splicing screens control for zoom/merge/roam/overlay



### NVD0405DH-2I-4K

#### Ultra-HD Network Video Decoder

- 2ch@8K/8ch@4K/36ch@1080P/144ch@D1 real-time decoding ability
- 2ch HDMI input max support 4K@30fps collection
- 2ch HDMI output (only for odd interfaces) max support 4K@60fps output
- Supports up to 4 video-wall display units or monitors
- Splicing screens control for zoom/merge/roam/overlay
- Supports 1/4/6/8/9/16/25/36 and free split
- Fisheye dewarp function, supports multi-video split display in ceiling mount, wall mount, and ground mount installation mode
- Supports alarm, bi-directional talk, RS232, RS485



# Video Intercom

## Large Apartments

### Overview

Dahua's Video Intercom Large Apartment solution enables easy communication between visitors, home owners, and property management centres. Dahua's intercom products come in a versatile lineup of IP up to 5,000 devices. CCTV and alarm integration offer more intelligence and security.

The management system comes in both a PC client and mobile app. This makes it convenient for security guards to manage an entire residential community with the PC client, while residents can answer the door from anywhere through our intuitive mobile app.

Open and standard SIP protocol eases third-party integration. The Dahua emergency phone terminal combines CCTV surveillance with information display and management devices to enable efficient emergency handling. Various product types are available to satisfy different installation requirements.

- Powerful System Capacity
- System Intergration
- Remote Unlock
- Face Recognition Technology
- HD Video Intercom
- IP66, IK07

### Highlights

- **Powerful System Capacity:**  
Powerful System Capacity with 5,000 devices

**Most New Apartments are Using IP Solution**

IP community or big apartment

Max 160 Apartment Door Station  
1 main VTH + max.4 sub VTH

#### Platform Recommended

- Use Platform as the SIP Server
- SIP ID < 1100 DSS 4004-S2
- SIP ID < 2200 DSS 7016-S2
- SIP ID < 5000 DSS 7016-S2\*3

#### DSS Compact



**• System Integration:**

Large apartment systems have a management centre which can be integrated with CCTV, Access Control, Vehicle Access, ANPR, Attendance and Maps, etc.



**Management Centre**

- Unlock history and call history.
- Release the txt information to VTH.
- VTH alarm uploads and integration.
- Unlock doors remotely.

**SIP Server**

DSS7016-S2 is a powerful surveillance system preloaded with Linux-optimized VMS software, which has high performance and scalability. It supports up to 1,000 cameras, and this number can be larger with distributed deployment, providing a very powerful all-in-one solution for projects.

**• Remote Unlock:**

- Digital Mobile Surveillance System for Video Intercom (DMSS for Video Intercom) & DSS MOBILE 2 (Management APP).
- Manage all the devices including notification releases, remote unlock, and alarm verifying.
- Answer the intercom with your smartphone and unlock remotely.



**• Face Recognition Technology:**

- Best AI can achieve: face verification accuracy of >99%; face comparison speed of ≤0.3s per person; and false recognition rate of <0.1%.
- There are several ways to open the door.
- Reflective inductive detection technology is applied for living life detection.
- Face Image Capacity: 20,000.
- Card Capacity: 10,000.
- Fingerprint Capacity: 10,000.

**AI Front-end Face Recognition**

Live detection based on deep face recognition algorithm. Photographs, videos and models can not be authenticated.

2 MP 120dB WDR	>99% Face verification accuracy	Capacity 100000 Face & 10000Fingerprint	0.3m~2m Recognition distance	Anti-fake Design
-------------------	---------------------------------------	---	------------------------------------	------------------



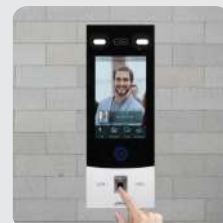
**Fingerprint Recognition**

There is more than one way to open the door.

**1000 Fingerprint Capacity**

Reflective inductive detection technology is applied for living life detection.

**Other Ways: Remote/Password/Card**



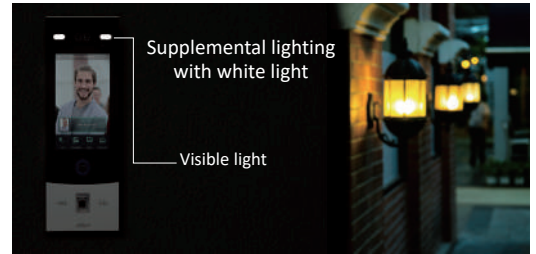
• **HD Video Intercom:**

**WDR:** Outdoor station achieves vivid images, even in the most intense contrast lighting conditions, using industry leading wide dynamic range (WDR) technology. For scenario applications with both bright and low lighting conditions that change quickly, True WDR (120 dB) optimizes both bright and dark areas of a scene at the same time to provide usable video.

**White Light:** White light fill light and IR fill light (fill light brightness can be adjusted)



**WDR:**  
The camera can still provide clear full-colour video even under low light environments. The minimum illumination is up to 0.005Lux@F1.6.



White Light

• **IP66, IK07:**

It allows easy Installation with flush and surface mount brackets and works normally under different environments and scenarios with high protection IP65 and an impact strength of IK07.



**Video Intercom (Large Apartment)**



**Large Apartment Outdoor Station**  
VTO9541D

**10-inch Apartment Door Station**

- 10-inch high-definition display; capacitive touch screen; resolution: 800 (H)×1280(V)
- Supports face, fingerprint, password, and card unlock
- Full duplex communication
- Outdoor stations can be managed through the platform; supports voice communication between mobile app and platform
- 2 MP low illuminance wide dynamic dual camera; white light fill light and IR fill light (fill light brightness can be adjusted)
- Card capacity: 100,000 cards; face capacity: 100,000 face images; fingerprint capacity: 10,000 fingerprints
- Face-camera distance: 0.3m–3m; Human height: 1.1m-2.4m
- Face verification accuracy >99%; face comparison speed ≤0.2s per person; false recognition rate <0.1%
- Face profiles can be recognized, the profile angle range is 0°-90°
- With face detection box; the largest face among the faces that appear at the same time is recognized first; the maximum face size can be configured on the web
- Supports living detection
- Supports duress alarm, tamper alarm, and fire alarm
- IK07; IP65 (Apply silica gel to gaps between the device and the wall. Liquid sodium silicate is recommended. For details, see the quick start guide.)
- Outdoor, supports flush mount



## Large Apartment Outdoor Station VTO7541G

### 8-inch Digital Face Recognition Outdoor Station

- Anodized aluminium alloy middle frame
- 8 inch capacitive touch screen and high definition IPS screen; resolution: 800 (H)×1280 (V)
- Face, fingerprint, password, and card unlock
- Face verification accuracy >99%; face comparison time ≤0.2s per person; false recognition rate <0.1%
- Face profiles can be recognized, the profile angle range is 0°–90°
- Supports living detection
- Full duplex communication
- Outdoor stations can be managed through the platform; supports voice communication between mobile app and platform
- 2 MP low illuminance wide dynamic dual camera; white light fill light and IR fill light (fill light brightness can be adjusted)
- Supports duress alarm, tamper alarm, and fire alarm
- IK07; IP66 (Apply silica gel to gaps between the device and the wall. Liquid sodium silicate is recommended. For details, see the quick start guide.)
- Surface mount and flush mount

#### MOUNTING ACCESSORIES

Optional:



VTM121



VTM120



## 2nd Confirmation Devices DHI-VTO2202F-P

### IP Home Door Station

- 2MP CMOS camera
- Mechanical button
- Night vision & voice indicator
- PoE
- 160° angle of view
- Compatible with VTH5222CH-S1 and VTNS1006A-2
- Group call
- Power supply using 2-wires
- Aluminium alloy plate
- IP65 & IK07
- Surface mounted and flush mounted

#### MOUNTING ACCESSORIES

Optional:



VTM114



VTM115



## Large Apartment Indoor Monitor VTH5341G-Q

### Android Indoor Monitor

- 10 inch capacitive TFT LCD screen
- Android 8.1 operating system
- 4 core processor, 2GB RAM, 8GB ROM
- Supports expansion Micro SD card, maximum 256GB
- Supports WiFi
- Standard PoE



## **Large Apartment Indoor Monitor** **DHI-VTH5441G**

### **10-inch Digital VTH**

---

- 10" TFT Capacitive touch screen, 1024 × 600
- IPC surveillance
- Alarm integration
- Embedded 8GB SD card
- Record & Snapshot



## **Master Station** **VTS5240B**

### **Master Station**

---

- 10" TFT Capacitive touch screen, 1024×600
- IPC surveillance
- Alarm integration
- Micro SD card optional, max 32GB
- Record and snapshot (SD card needed)



# Video Intercom Small Apartment

## Overview

Dahua's Video Intercom Small Apartment solution enables easy communication between visitors, home owners, and property management centers. Dahua's intercom products come in a versatile lineup of IP up to 210 devices without a management centre.

CCTV and alarm integration offers more intelligence and security.

Open and standard SIP protocol makes third-party integration easy.

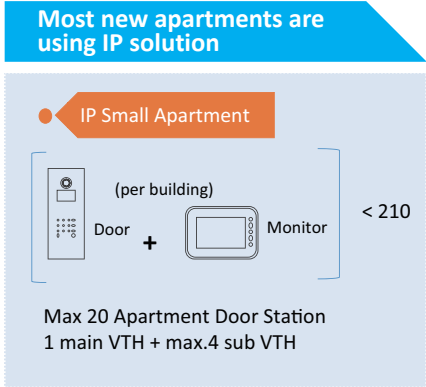
The Dahua emergency phone terminal combines CCTV surveillance with information display and management devices to enable efficient emergency call handling. Various product types are available to satisfy different installation requirements.

- Powerful System Capacity
- System Integration
- Remote Unlock
- More Visibility
- Flexible Combination
- IP65, IK07

## Highlights

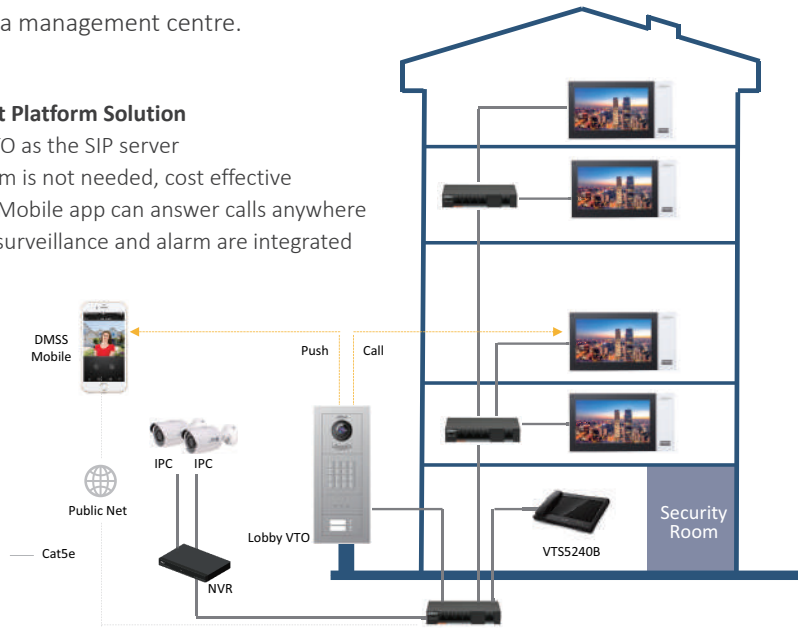
### • Powerful System Capacity:

Powerful System Capacity with 210 devices without a management centre.



### Without Platform Solution

- Use VTO as the SIP server
- Platform is not needed, cost effective
- DMSS Mobile app can answer calls anywhere
- Video surveillance and alarm are integrated



### • System Integration:

Small apartment systems can be integrated with CCTV. It supports a maximum of 64 IP cameras, and can integrate the alarm interface with alarm devices.



**• Remote Unlock:**

- Digital Mobile Surveillance System (DMSS for Video Intercom).
- Answer the intercom with your smartphone and unlock remotely.
- Receive notifications anytime, anywhere!



**• See More:**

**WDR**

Outdoor station achieves vivid images, even in the most intense contrast lighting conditions, using industry leading wide dynamic range (WDR) technology. For applications with both bright and low lighting conditions that change quickly, True WDR (120 dB) optimizes both the bright and dark areas of a scene at the same time to provide usable video.

**Fisheye**

White light fill light and IR fill light (fill light brightness can be adjusted)



**WDR:**

The camera can still provide clear full-colour video even under low light environments. The minimum illumination is up to 0.005Lux@F1.6.

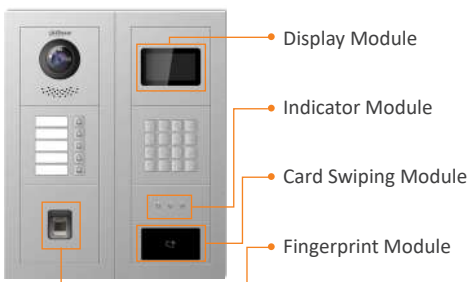


**Fisheye:**

- Fisheye camera with 160° view angle
- 2 MP high definition
- IR light
- Horizontal: 160°
- 2-wire IP

**• Flexible Combination:**

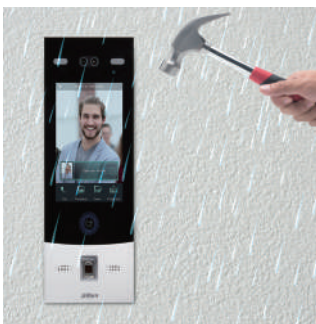
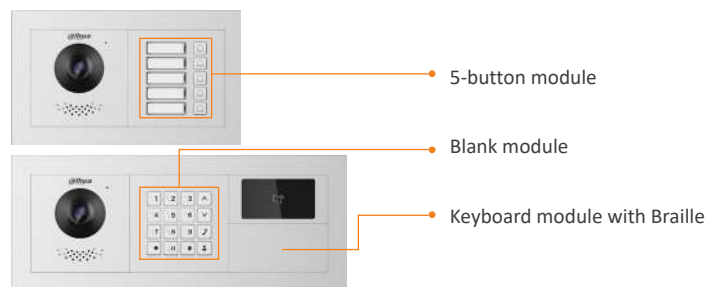
- Two-module or Three-module mounting
- Semi-module design
- Nine modules can be selected, apart from main modules.



**• Horizontal Installation:**

**Meet More Diverse Needs**

Two modules and three modules can be installed horizontally or vertically. Different installation methods can be applied to more different scenarios.



**• IP66, IK07:**

It allows an easy installation with flush and surface mount brackets and works normally in any weather conditions.



## Video Intercom (Small Apartment)



### Small Apartment Outdoor Station VTO4202F-X Series

#### Modular Outdoor Station

- Modules provide great expansibility
- Anodized front aluminum panel; IK07
- Supports voice and video communication
- 2 MP high definition fisheye camera with 160° view angle
- Access control function; controls two locks
- Compatible with 2-wire interface and RJ45 interface
- Surface mount and flush mount
- IP65 (Apply silica gel to gaps between the device and the wall. Liquid sodium silicate is recommended. For details, see the quick start guide.)

#### MOUNTING ACCESSORIES

Optional:



VTM127/VTM128



VTM125/VTM126



### Small Apartment Outdoor Station VTO6221E-P

#### Apartment Outdoor Station

- Small-sized apartment door station
- Supplementary lighting with white light
- 2MP CMOS camera
- Mechanical button with Braille
- Aluminium alloy plate, IP55, IK08
- Door release via password and Mifare card

#### MOUNTING ACCESSORIES

Optional:



VTM116-01



VTM117



### Small Apartment Indoor Monitor VTH2421FB(W)-P

#### 7-inch Digital VTH

- 7" TFT Capacitive touch screen, 1024×600
- IPC surveillance
- Alarm integration
- High performance & Cost-effective
- Supports 8GB SD card
- Supports standard PoE



### Small Apartment Indoor Monitor VTH5221D/DW-S2

#### 7-inch Wi-Fi Indoor Monitor

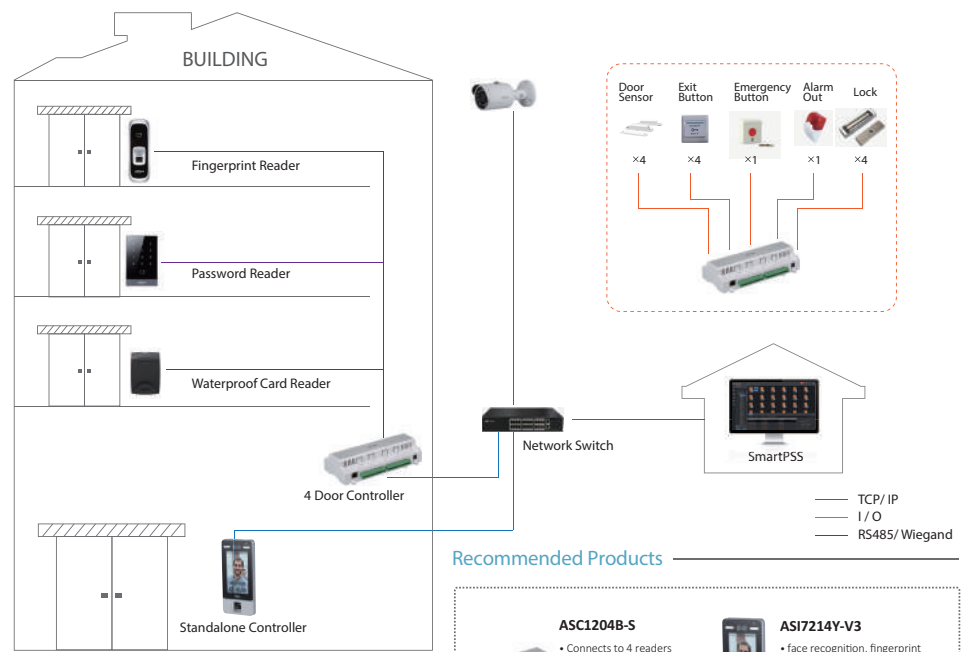
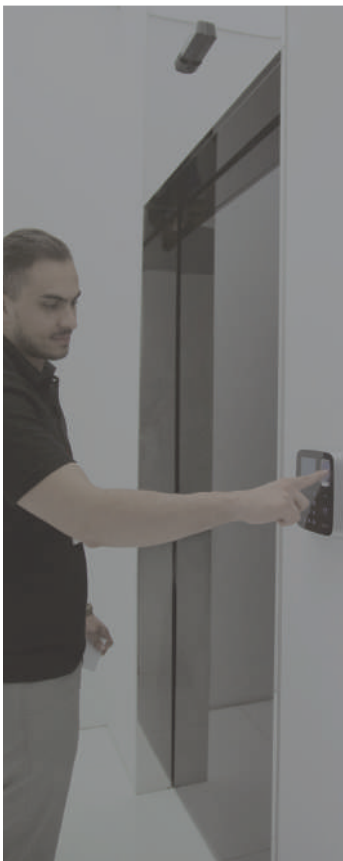
- 7" TFT Capacitive touch screen, 1024x600
- IPC surveillance
- 6ch wired alarm integration, 6ch wireless alarm integration (433MHZ)
- Micro SD card optional, max 32GB
- Record & Snapshot (SD card needed)

# Access Control

## Overview

Dahua Access Control offers a wide range of products and various solutions designed for preventing unauthorized personnel from entering designated areas and keeping access records. Supporting management of up to 100,000 users, 128 time zone plans, logs, and storage, Dahua Access Control products and solutions offer a wide selection including standalone, controllers, readers, and related software. Dahua supports standard device SDKs, CGI, and Onvif (profile C) to make integration easy with third-party software.

- Face Recognition Algorithm
- Anti-fake Algorithm
- WDR
- P2P DMSS
- Large Capacity



**Features**

- Differential Rights Management
- Reports Management
- Video Linkage
- Multi-door Interlock
- Anti-passback
- Attendance

**Recommended Products**

- ASC1204B-S**
  - Connects to 4 readers
  - 100,000 cards & 300,000 logs
  - Wiegand or RS-485 interface
- ASI7214Y-V3**
  - face recognition, fingerprint recognition, card swiping, password
  - 7 inch touchscreen
  - wifi
  - access control and time attendance
  - wiegand input/output, osdp
- ASR1102A(V2)**
  - Up to 3000 fingerprints capacity
  - Supports card, fingerprint
- ASR1101A**
  - RS485/Wiegand protocol
  - Support card, password

## Highlights

### • Face Recognition Algorithm:

With the face recognition algorithm, the access controller can recognize more than 360 positions on a human face. It also provides face verification accuracy of >99.5%, face comparison speeds of 0.35s per person, and a low false recognition rate.

**Benefit:** It helps to improve the access passage efficiency. The duration is less than 0.2 s/person.



**• Anti-fake Algorithm:**

Features dual camera design to achieve live detection that does not recognise fake photos.

**Benefit:** It helps to improve access safety by avoiding fake photo recognition.

**• WDR (Wide Dynamic Range):**

Using industry-leading Wide Dynamic Range (WDR) technology, the camera achieves vivid images even in the most intense contrast lighting conditions, For applications with both bright and low lighting conditions that change quickly, the True WDR (120 dB) optimizes both the bright and dark areas of a scene to provide a usable video output.

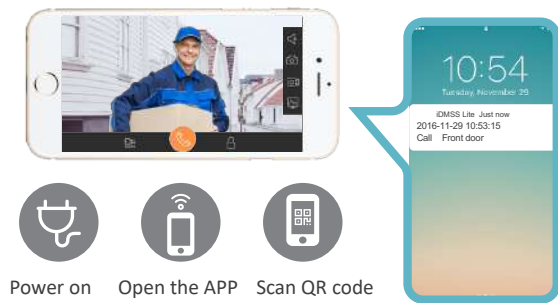


**WDR:**

The camera can still provide clear full-colour video even under low light environments. The minimum illumination is up to 0.005Lux@F1.6.

**• P2P DMSS:**

- Digital Mobile Surveillance System (DMSS).
- Answer the door with your smartphone and unlock remotely.
- DMSS supports two-way talk with VTO, remote door access, local alarm push notifications, snapshots and record.



**• Large Capacity:**

Holds 50,000 users, 50,000 face images, 10,000 fingerprints, 50,000 cards, 50,000 passwords, and 50 administrators.



Access Control



**Standalone**  
**DHI-ASI7214Y-V3**  
Face Recognition Access Controller

- 7 inch IPS display, resolution 1024×600
- Supports face unlock, fingerprint unlock, IC card unlock, and password unlock; unlock by period
- Comes with face detection box; the largest face among faces that appear at the same time is recognized first; the maximum face size can be configured on the web
- 2MP wide-angle WDR lens; with auto/manual fill light
- Face-camera distance: 0.3 m–2.0 m; human height: 0.9 m–2.4 m
- With the face recognition algorithm, the access controller can recognize more than 360 positions on a human face
- Face verification accuracy >99.5%; face comparison speed 0.35s per person; low false recognition rate
- Supports profile recognition with profile angle of 0°–90°
- Holds 50,000 users, 50,000 faces, 10,000 fingerprints, 50,000 cards, 50,000 passwords, and 50 administrators
- Supports living detection
- Supports duress alarm, tamper alarm, intrusion alarm, door contact timeout alarm, illegal card exceeding threshold alarm, and more
- Supports general users, patrol users, VIP users, guest users, and disabled users
- With 4 unlock status display modes



**Standalone**  
**ASI8214Y-V3**  
Face Recognition Access Controller

- Aluminium alloy housing with wire-drawing treatment; IP55; applicable in outdoor and indoor environment
- 10.1 inch LCD touch screen; resolution 1280×800
- With 2 MP wide-angle dual lens, white fill light, IR light, and WDR
- Supports face, card, password, and fingerprint unlocking; unlock by period
- User data can be stored at the access controller; can hold 100,000 face images and works without network
- Face-camera distance: 0.3m-2.0m
- Face verification accuracy ≥99.5%; face comparison speed ≤0.2s per person; low false recognition rate; supports living detection



**Access Controller**  
**ASC2204C-H**  
Four Door Master Access Controller

- Supports 200,000 valid cards & 150,000 records
- CAN bus can cascade 16 sub controller modules
- Supports multiple cards
- Supports card, password, fingerprint and combination
- TCP/IP interface
- Wiegand or RS-485 interface to readers
- Door time out alarm, intrusion alarm, duress alarm and tamper alarm
- Global anti-passback, multi-door interlock, multi-personnel opening, remote verification unlocking
- Web service can be used to configure subcontroller
- Supports 128 efficient time and holiday schedules
- Built-in RTC, supports DST
- Health-check function ensures the device works continuously
- Surface mounted installation
- Accumulator battery extension
- Onvif Profile C, CGI, SDK to the third party platform



## Access Controller

### ASC2104B-T

#### Four Door Slave Access Control Module

- Supports 20,000 valid cards & 30,000 records
- Supports multiple cards
- Supports card, password, fingerprint and combination
- Only works with ASC2204-H with CAN bus
- Wiegand or RS-485 interface to readers
- Door time out alarm, intrusion alarm, duress alarm and tamper alarm
- Anti-passback, multi-door interlock, multi-personnel opening
- Supports 128 efficient time and holiday schedules
- Health-check function ensures the device works continuously
- Surface mounted installation



## Access Controller

### ASC1208C-S

#### Eight Door One-Way Access Controller

- Supports 100,000 valid cards & 150,000 records
- Supports multiple cards
- Supports card, password, fingerprint and combination
- TCP/IP interface to PC
- Wiegand or RS-485 interface to readers
- Door time out alarm, intrusion alarm, duress alarm and tamper alarm
- Anti-pass back, multi-door interlock, multi-card opening
- Supports 128 efficient time and holiday schedules
- Health-check function ensures the device works continuously
- Surface mounted installation
- Accumulator battery extension



## Reader

### ASR1102A(V2)

#### Fingerprint RFID Reader

- RS-485 protocol
- Default IC (Mifare) card ("-D" means ID EM card)
- Supports card, fingerprint
- Up to 3,000 fingerprints capacity
- Blue backlight
- Health-check function ensures the device works continuously
- Beep and indicator
- Surface mounted installation



**Reader**  
**ASR1101A**

**RFID Reader**

- Support RS485, Wiegand34 protocol (Wiegand 26 optional)
- 13.56MHz (Mifare)
- 125KHz (EM-ID)
- Red and Green LEDs
- Sensitive touch keypad with blue backlight
- Health-check function ensures device works continuously
- Beep Buzzer and LED indicator
- Surface mounted installation



**Reader**  
**ASR1200D**

**Slim Water-proof RFID Reader**

- Support RS485, Wiegand34 protocol (Wiegand 26 optional)
- 13.56MHz (Mifare)
- 125KHz (EM-ID)
- Red and Blue LEDs
- Health-check function ensures device works continuously
- Water-proof (Outdoor use)
- Surface/Flush mounted installation



# Mobile

## Overview

Mobile AI series products are equipped with the most advanced AI technologies, providing higher flexibility and accuracy for people and vehicle recognition. With the help of deep learning algorithms, it is possible to offer various advanced applications such as ADAS, DSM, Face Recognition, ANPR, etc., which is of significant value to end-users.

The new generation of mobile video recorders uses H.265 technology that can significantly lower transmission bandwidth to save storage. It can support 1080P high-definition real-time recording, real-time vehicle location tracking and monitoring, and face detection. All information, including GPS and video can be uploaded via wireless networks: 3G/4G/Wi-Fi.

Recorders are certified by EN50155 and ISO16750 standards.

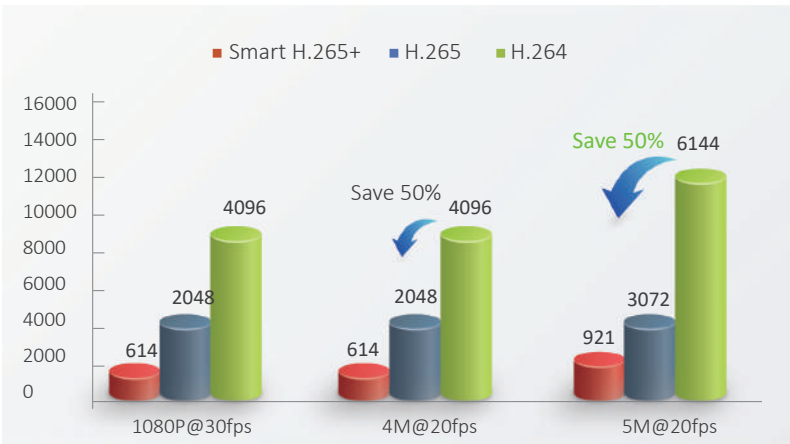
- Smart Codec Encoding and Decoding (up to 85% reduced bandwidth compared to H.264)
- ADAS
- DSM
- Face Recognition
- P2P
- Anti-vibration
- Wide Range of Input Voltage (6-36V)
- 3G/4G/Wi-Fi
- GPS
- Multiple interfaces

## Highlights

● **Smart Codec Encoding and Decoding (up to 85% reduced bandwidth compared to H.264):**

Smart H.265+ is the optimised version of the H.265 codec that uses a scene-adaptive encoding strategy, dynamic GOP, dynamic ROI, flexible multi-frame reference structure and intelligent noise reduction to deliver high-quality video without straining the network. Smart H.265+ technology reduces bit rate and storage requirements by up to 85% compared to standard H.264 video compression.

Advanced **Smart H.265+** can save up to 85% bandwidth and storage.



Benefit 1: Achieves lower bandwidth requirement

How many days of full-HD footage can a 4TB HDD store?



Benefit 2: Saves recorder cost for higher bay unit, as well as HDD quantity and storage capacity.

**• ADAS (Advanced Driver Assistance System):**

Based on sensors installed in the vehicle that are used to collect real-time environment data, Advanced Driver Assistance System (ADAS) analyses static and dynamic objects, detects and tracks, in order to alert the driver about danger in milliseconds to improve both car and road safety.

Based on the detection and trace of vehicle, non-vehicle, pedestrian, road marks, traffic sign, vehicle speed and regions, ADAS allows the driver to analyse the current and future status and predict potential danger that will trigger the alarm. It includes Forward Crash Warnings, Vehicle Distance Detection and Lane Deviation Warnings.



Forward Crash Warning



Vehicle Distance Detection



Lane Deviation Warning

**• Mobile Vehicle:**

**DSM (Driver Status Monitoring)**

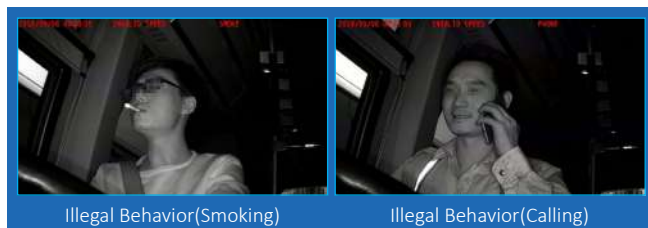
Based on the detection and tracing of face details, direction, arm detection, and the analysis of vehicle information, the Driver Status Monitoring (DSM) can detect the driver's identity and status. It can also predict potential danger, ensuring the safety of the driver while driving.

It promotes good driver behaviour and provides Driver Fatigue Warnings and Illegal Behaviour Warnings.



Fatigue Driving(Yawning)

Fatigue Driving(Eye Closing)



Illegal Behavior(Smoking)

Illegal Behavior(Calling)

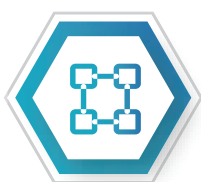
**• Bus, Lorry:**

**Face Recognition**

Dahua's Face Recognition technology extracts the features of captured face images and compares them with those in the face database to recognise the person's identity.



Face Detection



Feature Modeling



Feature Comparison



Results Output



- 2-ch Face Capture
- 20 Face Databases
- 30,000 Face Images

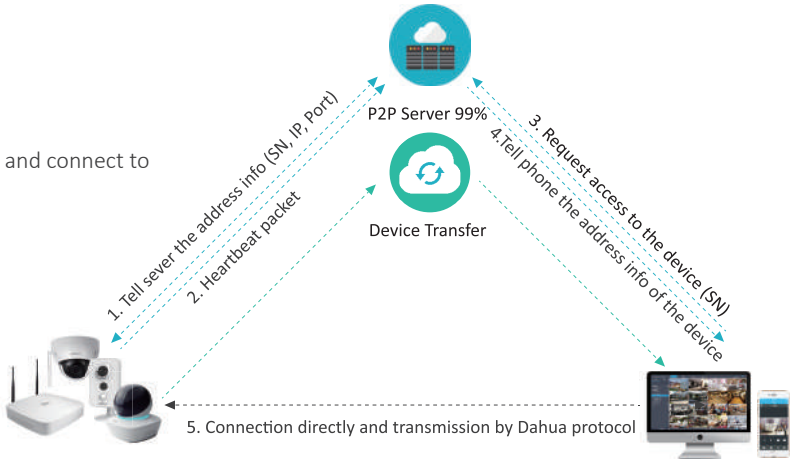


**P2P:**

The DMSS Plus app is available on the iOS App Store and Google Play. It makes surveillance easy and simple, allowing you to remotely access NVR devices, view live video, receive event push notifications, and search for recorded videos from an iPhone, iPad, or Android phone at anytime from virtually anywhere!

**P2P Connection**

- No DDNS setting, no port mapping, just scan SN QR code and connect to mobile phone.
- Easily monitor at anytime and anywhere.
- Get important alarm alerts immediately.



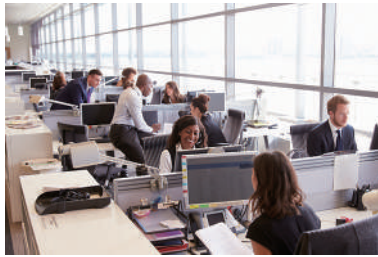
**Benefit 1:** Access and monitor cameras from anywhere in the world



Home



Factory



Office

**Anti-vibration:**

Using shock-absorbing material and structures, the newly designed hard disk box can cope with varying degrees of vibration, keeping the system working normally at all times.

- Patented HDD box is designed to protect the hard drive within the recorder, and to ensure that the data is secure and saved in case of any movement.

**Wide Range of Input Voltage:**

Wide range of power supply protects the video recorder when the voltage output of vehicle battery changes during driving. Can fit in different vehicles with different battery output voltages, and the built-in UPS guarantees a normal shut down procedure in case of power failure.



Bus



Lorry



Taxi

**• 3G/4G/Wi-Fi:**

Embedded with 3G/4G/Wi-Fi modules, the device can register on a public network to connect with VMS, and can send all information (video/audio/alarm/gps) via a wireless network.

- Wireless feature enables the remote operation and communication between the vehicle and control room. It enables the operator to receive real-time information and alarms.



Bus



Taxi



Lorry



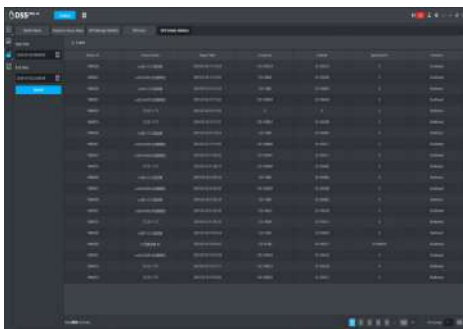
HGV



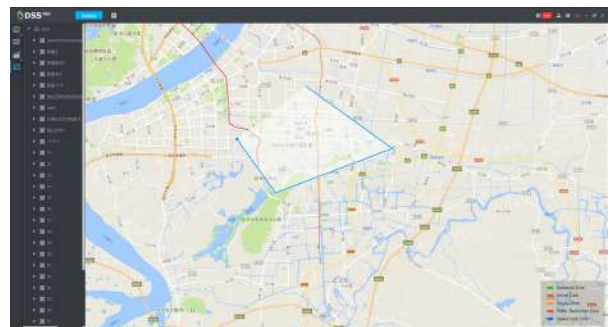
**• GPS:**

An embedded GPS module can receive location information and upload it to the VMS. Even when the device is offline, it can still upload the information after the network has recovered, and the vehicle can be tracked on the digital map of the VMS.

- The real-time GPS can be synchronised back to the control room, and the offline GPS information can also be backed up once the vehicle is reconnected to the VMS.



- Real-time GPS is used and a virtual geo fence can be set. For common types of vehicles, if they are outside the permitted areas, the control room will receive alarms, allowing the operator to check with the driver if anything has happened.



**• Multiple Interface:**

With different kinds of ports, like RS232, RS485, I/O, the video recorder can be connected to various accessories, such as a card reader, fuel sensor, panic button, etc. The video, audio, alarm and location information can be uploaded to the VMS.

- The interface of the recorder is sufficient and can be extended based on different requirements, and can collect or receive information from the real world.



## Mobile



4ch: MNVR8104-GFW-I

8ch: MNVR8208-GFW-I

#### 4/8 Channels POE H.265 1/2 HDD Mobile Video Recorder

- Supports 4/8 channels of PoE IP cameras input and 2 channels of HDCVI input
- Supports H.265/smart H.265 video compression
- Supports 4MP realtime recording
- Supports face detection, license plate recognition, driver behavior detection including smoking, calling, yawning, and car collision warning
- VGA, HDMI simultaneous video output
- Supports 1/2 HDD, 2 USB3.0, 1 USB2.0
- Uses aviation connectors
- Multiple network monitoring: Web viewer, CMS (DSS/PSS) & DMSS



4ch: MNVR4104-GFW

8ch: MNVR4208-GFW

#### 4/8 Channels POE 1/2 HDD Mobile Video Recorder

- Supports 4/8 channels POE IP cameras input
- Supports H.265/smart H.265 video compression
- Supports 4/8 channels 4MP realtime recording
- VGA, TV, HDMI simultaneous video output
- Supports 1/2 HDD, 3 USB2.0
- Aviation connectors used
- Multiple network monitoring: Web viewer, CMS (DSS/PSS) & DMSS



MXVR4104-GFW

#### 4 Channels H.265 1 HDD Mobile Video Recorder

- Supports penta-brid (HDCVI/AHD/TVI/CVBS/IP) video input
- Supports H.265/smart H.265 video compression
- Supports 4 channels 1080P realtime recording
- VGA/TV simultaneous video output
- Supports 1 HDD and 1 SD card
- Supports face detection
- Aviation connectors used
- Multiple network monitoring: Web viewer, CMS (DSS/PSS) & DMSS



MXVR6212-GFW

#### 8+4 Channel 2 HDD Mobile Video Recorder

- Supports penta-brid (HDCVI/AHD/TVI/CVBS/IP) video input
- H.264 dual-stream video compression
- Supports 12 (8+4) ch 1080P realtime recording
- VGA/TV simultaneous video output
- Supports 2 HDD, 2 USB3.0
- Aviation connectors used
- Multiple network monitoring: Web viewer, CMS (DSS/PSS) & DMSS



MCVR6208-GFW

#### 8 Channel Mobile HDCVI Video Recorder

- Supports HDCVI/Analog Video input
- H.264 dual-stream video compression
- Supports 8 ch 1080P realtime recording
- VGA/TV simultaneous video output
- Supports 2 SATA HDD, 2 USB3.0
- Aviation connectors used
- Multiple monitoring: Web viewer, CMS (DSS) & DMSS



### ADAS-01

#### ADAS Camera

- CMOS sensor
- HD resolution with detailed image quality
- Applicable to different lighting condition with WDR and high
- low-illumination performance
- Adjustable angle



### DSM-C01

#### DSM Camera

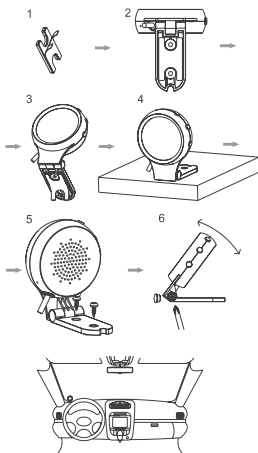
- CMOS sensor; high-quality images
- Eyes can be recognised in totally dark conditions or while wearing sunglasses (does not block IR light) with IR fill light
- Special IR auxiliary illumination design to protect your eyes

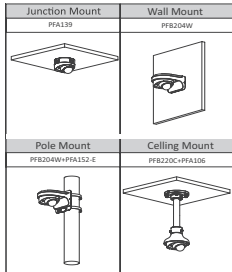


### DM02

#### Alarm Display

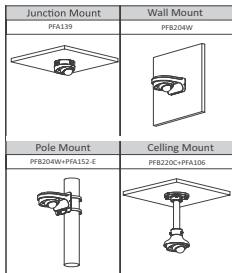
- It is used together with storage devices such as MXVR and MNVR. The alarm display shows and gives out voice reminders of driver behavior such as yawning, smoking, fatigue, lane departure, and warning of a vehicle collision





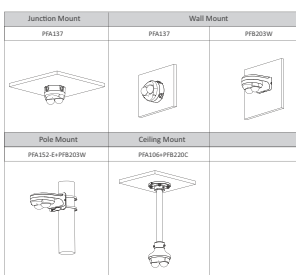
**RJ45: IPC-HDBW3241F-FD-M**  
**Aviation: IPC-HDBW3241F-FD-M12**  
**2MP IR Starlight Dome Network Camera**

- 1/2.8" 2Megapixel progressive scan CMOS
- H.265 & H.264 triple-stream encoding
- 25/30fps@1080P (1920×1080)
- WDR (120dB), Day/Night (ICR), 3DNR, AWB, AGC, BLC
- Multiple network monitoring: Web viewer, CMS (DSS/PSS) & DMSS
- Max. IR LEDs Length 50m
- IP67, IK10, PoE
- Supports face capture, face attributes
- Supports people counting



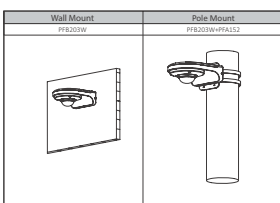
**RJ45: IPC-HDBW3231F-M**  
**Aviation: IPC-HDBW3231F-M12**  
**2MP IR Mini Dome Network Camera**

- 1/2.8" 2Megapixel progressive scan CMOS
- H.265 & H.264 dual-stream encoding
- 25/30fps@1080P (1920×1080)
- WDR (120dB), Day/Night (ICR), 3DNR, AWB, AGC, BLC
- Multiple network monitoring: Web viewer, CMS (DSS/PSS) & DMSS
- 2.8mm, 3.6mm, 6mm fixed lens
- Max. IR LEDs Length 23m
- Micro SD memory, IP67, IK10, PoE+



**RJ45: IPC-HDBW4231F-E2-M**  
**Aviation: IPC-HDBW4231F-E2-M12**  
**2x2MP IR Mini Dome Network Camera**

- Two 1/2.8" 2Megapixel progressive scan STARVIS™ CMOS
- H.265 & H.264 dual-stream encoding
- 25/30fps@2M (1920×1080)
- Smart Detection supported
- WDR (120dB), Day/Night (ICR), 3DNR, AWB, AGC, BLC
- Multiple network monitoring: Web viewer, CMS (DSS/PSS) & DMSS
- 2.8mm fixed lens (3.6mm option)
- Max. IR LEDs Length 20m
- Micro SD memory, IP67, IK10, PoE



**RJ45: IPC-EB5531-M**  
**Aviation: IPC-EB5531-M12**  
**5MP Panaromic Network Fisheye Camera**

- 1/2.7" 5Megapixel progressive scan CMOS
- H.265 & H.264 triple-stream encoding
- 25fps@5MP (2592×1944), 25/30fps@3MP (2048×1520)
- Smart Detection supported
- WDR (120dB), 3DNR, AWB, AGC, BLC
- Multiple network monitoring: Web viewer, CMS (DSS/PSS) & DMSS
- 1.4mm fixed lens
- Built-in Mic
- Micro SD memory, IP67, PoE







**RJ45: IPC-MBW4431-AS**  
**Aviation: IPC-MBW4431-M12**

**4MP IR Mobile Network Camera**

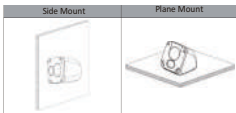
- 1/3" 4Megapixel progressive scan CMOS
- H.265 & H.264 triple-stream encoding
- 25/30fps@4M (2688x1520)
- WDR (120dB), Day/Night (ICR), 3DNR, AWB, AGC, BLC
- Multiple network monitoring: Web viewer, CMS (DSS/PSS) & DMSS
- 2.8mm fixed lens (3.6mm, 6mm options)
- Max. IR LEDs Length 30m
- Micro SD memory, IP67, IK10, IP69K, PoE
- E-MARK (ECE-Regulation No. 10)



**Horizontal Mount: IPC-MW1230D-HM12**  
**Vertical Mount: IPC-MW1230D-VM12**

**2MP IR Mobile Network Camera**

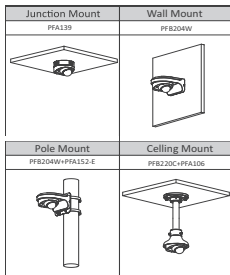
- 1/2.7" 2Megapixel progressive scan CMOS
- H.265 & H.264 triple-stream encoding
- 25/30fps@1080 (1920x1080)
- DWDR, Day/Night (ICR), 3DNR, AWB, AGC, BLC
- Multiple network monitoring: Web viewer, CMS (DSS/PSS) & DMSS
- 2.8mm fixed lens (3.6mm, 6mm options)
- Max. IR LEDs Length 30m (6mm lens)
- IP67, IP69K
- EN50155 (Optional), E-MARK (ECE-Regulation No.10)



**HAC-HDBW2241F-M-A**

**2MP Mobile HDCVI IR Dome Camera**

- Starlight, 120dB true WDR, 3DNR
- Max. 30fps@1080P
- Audio in interface, built-in mic
- HDCVI output (Aviation connector)
- 3.6mm fixed lens (2.8mm option)
- Max. IR length 20m, Smart IR
- IP67, IK10, DC12V±30%
- IP69K, shock-proof



**MOUNTING ACCESSORIES**

Optional:

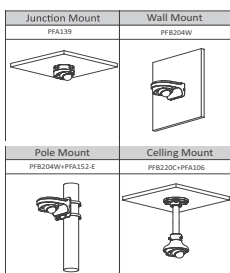
- PFA139 Junction Box
- PFB204W Wall Mount
- PFA152-E Pole Mount
- PFB220C Ceiling Mount
- PFA106 Mount Adapter
- PFM321D DC12V1A Power Adapter
- LR1002-1ET/1EC Single-port long reach ethernet over coax extender
- PFM900-E Integrated Mount tester
- PFM114 TLC SD card



**HAC-HDBW1200F-M**

**2MP Mobile HDCVI IR Dome Camera**

- Max 30fps@1080P
- HDCVI output (Aviation connector)
- 3.6mm fixed lens (2.8mm option)
- Max. IR length 20m, Smart IR
- IP67, IK10, IP69K
- Shock-proof



**MOUNTING ACCESSORIES**

Optional:

- PFA139 Junction Box
- PFB204W Wall Mount
- PFA152-E Pole Mount
- PFB220C Ceiling Mount
- PFA106 Mount Adapter
- PFM321D DC12V1A Power Adapter
- LR1002-1ET/1EC Single-port long reach ethernet over coax extender
- PFM900-E Integrated Mount tester
- PFM114 TLC SD card



## HAC-HMW3200L-FR

### 2MP Double-lens HDCVI Mobile IR Camera

- Max 30fps@1080P
- HD and SD output switchable
- 2.1mm fixed lens
- Built-in Mic
- Max. IR length 3m, Smart IR
- DC12V



## HAC-HMW3200

### 2MP Mobile HDCVI IR Cube Camera

- Max 30fps@1080P
- HDCVI output (Aviation connector)
- 2.1mm fixed lens
- Max. IR length 20m, Smart IR
- IP67, DC12V
- Shock-proof



## HAC-HMW3200L

### 2MP HDCVI IR Eyeball Mobile Camera

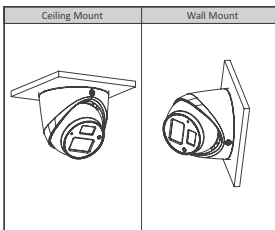
- Max 30fps@1080P
- HD and SD output switchable
- 2.1mm fixed lens
- Built-in Mic
- Max. IR length 3m, Smart IR
- DC12V



## HAC-HDW1220G-M

### 2MP Mobile HDCVI IR Eyeball Camera

- Max 30fps@1080P
- HDCVI output (Aviation connector)
- 3.6mm fixed lens (2.8mm, 6mm options)
- Max. IR length 20m, Smart IR
- IP67, DC12V
- Shock-proof



# Traffic

## Overview

With an industry-specific GS-CMOS image sensor, high-performance CPU processor, and deep learning algorithm, the AI enforcement camera features ultra-high definition, applicable for traffic violation snapshots in E-police and ANPR modes, records of passing vehicles, collection of traffic information, event detection, etc.

Access ANPR cameras are designed for number plate monitoring in low-speed scenarios, such as car parks, petrol stations, campus streets, etc. It is suitable for vehicle entrance and exit management as it has a whitelist function and the ability to control barrier gates. With embedded ANPR algorithms and true WDR, the Access ANPR camera can accurately detect and recognise vehicle number plates in all environments.

- **Vehicle Structure:** 11 vehicle size and 11 vehicle colours in daytime
- **Night-time Images Improved:** highlight the number, improve headlight control, characters identifiable
- **GS CMOS Sensor:** WDR, Low illuminance index

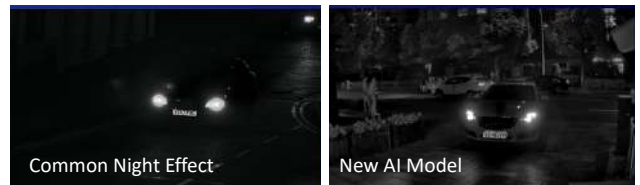
## Highlights

- **Vehicle Structure:** 11 vehicle size and 11 vehicle colours in daytime

- 11 vehicle size and 11 vehicle colours in daytime.  
- Identify and search for the vehicle not only through ANPR but also through all the other characters.



- Highlight the license plate to see the characters clearly.  
- Improved headlight control to clearly see the whole vehicle in the dark.



- **GS CMOS Sensor :**

Industry-specific GS-CMOS image sensor with high sensitivity, high SNR, and excellent WDR provides lifelike images in all weather conditions.

Wide dynamic range is one of the key indexes of ITS. Traditional CCD camera, based on its inherent characteristics, even with multiple exposures, GS CMOS camera, WDR has reached 64dB, greatly improving the image in the backlight environment.



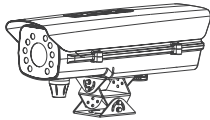
Low illuminance index is another important index to test the intelligent traffic camera. The actual illumination of traditional CCD camera can usually reach moonlight levels of 0.01Lux. GS CMOS camera has a starlight level of 0.001Lux.



GS CMOS structure eliminates the Smear effect in principle, and can take a clear image of the centre of harsh light or under harsh light, which is especially suitable for scenes with harsh light during day and night.



Traffic



2 Lanes: ITC352-RU2D-IRL8  
3 Lanes: ITC952-RU2D-IRL8

AI Enforcement Camera

- GS-CMOS image sensor
- Video compression standards: H.265/H.264M/H.264H/H.264B/MJPEG
- Integrated design, IP67

MOUNTING ACCESSORIES

Optional:



PFA162  
3-dimensional universal  
mounting bracket



ITC215-PW4I-IRLZF27135

2MP Short Range Access ANPR Camera

- 1/2.8 inch 2Megapixel Progressive scan CMOS
- WDR, Day/Night (ICR), 3DNR, BLC, HLC
- H.265 & H.264 dual-stream encoding
- Micro SD memory
- Powerful 2.7-13.5mm motorized lens and IR light, ideal for monitor ANPR distance 3-8m
- IP67, and superior performance for outdoor applications
- Embedded with LPR algorithm inside the camera
- Vehicle data structuring: number plate recognition, vehicle size, vehicle colour detection, etc.



ITC237-PW6M-IRLZF1050

2MP Long Range Access ANPR Camera

- 1/1.8 inch 2Megapixel Progressive scan CMOS
- WDR, Day/Night (ICR), 3DNR, BLC, HLC
- H.265 & H.264 dual-stream encoding
- Micro SD memory
- Powerful 10-50mm motorized lens and IR light, ideal for monitor ANPR distance 8-25m
- IP67, and superior performance for outdoor applications
- Embedded with LPR algorithm inside the camera
- Vehicle data structuring: number plate recognition, vehicle size, vehicle colour detection, etc.



IPMECS-2201C-IR

2 Megapixel Full AI Access ANPR Kit

- Integrates capture camera, display screen, audio prompt and audio intercom
- Built-in 2MP deep learning camera adapting to more scenes
- Highlight display screen with a large visual angle and long service life
- Simple construction, simple wiring and easy maintenance
- Embedded with LPR algorithm inside the camera
- Vehicle data structuring: LPR, vehicle size, and vehicle colour detection, etc.

## Accessory

### Solar Power System

#### Overview

Integrated solar monitoring systems offer an all-in-one design that uses 4G to transfer monitoring data and utilises solar energy for power. It is easy and quick to install, and can save additional wiring. Its three elements include a 4G network camera, integrated solar power system and camera mounting bracket, which are suitable for shops, order delivery and transportation.

The integrated solar power system comprises integrated solar panels, lithium batteries, maximum power point tracking (MPPT) charging controller and mounting brackets. It provides a stable power supply to the front-end data acquisition system-4G network camera through a high conversion charging device. It is compact, portable and easy to install, disassemble and maintain compared with conventional systems.

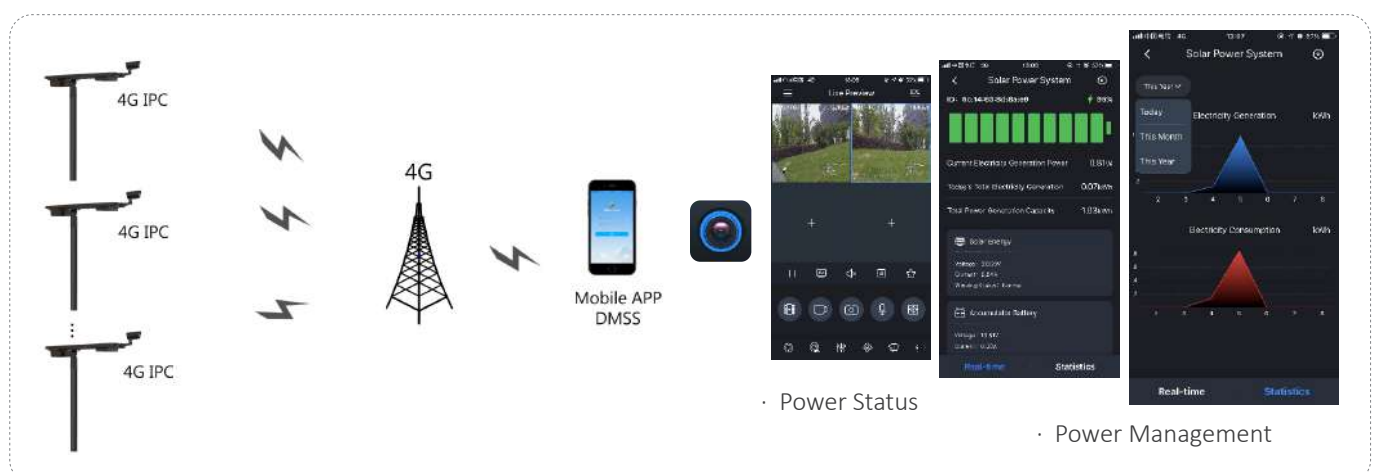
The 4G supported IR bullet camera delivers 2MP resolution with a 3.6mm or 6mm fixed lens. The camera can be connected to mobile internet as long as you have a SIM card, making it an excellent choice for a variety of small to medium-sized applications such as off-grid systems, farms, forests, borders, etc. It allows camera installation via wall mounted brackets, which supports multi-angle flexible adjustment.

- Perimeter Protection
- Remote Monitoring with APP
- Lithium-ion Phosphate Battery
- Supports 4G/Wi-Fi Transmission
- MPPT Solar Controller
- Protection (IP67, wide voltage)

#### Highlights

##### • Remote Monitoring with APP:

With Dahua cameras, it supports real-time remote monitoring of the system, operation status and battery alarm prompts via the APP.



##### • Lithium-ion Phosphate Battery:

Compact structure integrated with solar panel, lithium battery pack and charging controller to improve the appearance, installation, and maintenance of the system.

##### • Supports 4G/Wi-Fi Transmission:

The camera can be connected to Mobile Internet as long as you have a SIM card. You can then place it anywhere without worrying about the cabling issues. Solar panel has wireless PoE power connection for wireless devices.



- **Lithium-ion Phosphate Battery :**

Compact structure integrated with solar panel, lithium battery pack and charging controller to improve the appearance, installation, and maintenance of the system.

- **Supports 4G/Wi-Fi Transmission :**

The camera can be connected to Mobile Internet as long as you have a SIM card. You can then place it anywhere without worrying about the cabling issues. Solar panel has wireless PoE power connection for wireless devices.

- **MPPT Solar Controller :**

MPPT controller helps to improve the energy utilisation and the Power Series efficiency of the system. It raises the charging efficiency by 10%–30% compared with conventional PWM controllers.

- **Protection (IP67, wide voltage):**

The camera allows for  $\pm 25\%$  input voltage tolerance that is suitable for the most unstable conditions found in outdoor applications. Its 2KV lightning rating provides effective protection for both the camera and its structure against lightning strikes. Subjected and certified to rigorous dust and immersion tests (IP67), the camera is the perfect choice for installations in the most unforgiving environments. Dahua cameras operate in extreme temperature environments, rated for use in temperatures from  $-30^{\circ}\text{C}$  to  $+60^{\circ}\text{C}$  ( $-22^{\circ}\text{F}$  to  $+140^{\circ}\text{F}$ ) with 95% humidity.

## Accessory Solar Power System



### KIT/DH-PFM364L-D1/DH-IPC-HFW4230MP-4G-AS-I2/DH-PFB121W

#### Integrated Solar Monitoring System High-end Multiservice Routing Switches

##### Solar Power System

- Integrated die casting casing
- Aluminum alloy frame
- Monocrystalline solar panel
- Lithium battery pack
- Remote monitoring with APP
- Maximum Power Point Tracking (MPPT) charging Controller

##### RS485 communication function

- Electronic protection

##### 4G Network Camera

- 1/2.9" 2Megapixel progressive CMOS
- H.265 & H.264 dual-stream encoding
- 25/30fps@2M (1920×1080)
- Day/Night (ICR), 3DNR, AWB, AGC, BLC
- Multiple network monitoring: Web viewer
- Micro SD card slot, up to 256GB
- 3.6mm, 6mm fixed lens
- Max. IR LEDs Length 40m
- 4G supported
- IP67



### PFM364L-D1 Integrated 60W Solar Power System

- Integrated die casting casing
- Aluminum alloy frame
- Monocrystalline solar panel
- Lithium battery pack
- Remote monitoring with App
- Maximum Power Point Tracking (MPPT) charging controller
- RS-485 communication function
- Electronic protection




### PFM363L-SD1 Integrated 120W Wireless Solar Power System

- Integrated die casting casing
- Aluminum alloy frame
- Monocrystalline solar panel
- Lithium battery pack
- Remote monitoring with App
- Maximum Power Point Tracking (MPPT) charging controller
- RS-485 communication function
- Electronic protection
- Non-standard PoE for wireless device through combiner

**MOUNTING ACCESSORIES**

Optional:



Camera Mountin Plate



### PFM363L-D1 Integrated 120W Solar Power System

- Integrated die casting casing
- Aluminum alloy frame
- Monocrystalline solar panel
- Lithium battery pack
- Maximum Power Point Tracking (MPPT) charging controller
- RS-485 communication function
- Electronic protection



### PFM371-M275 Solar Panel

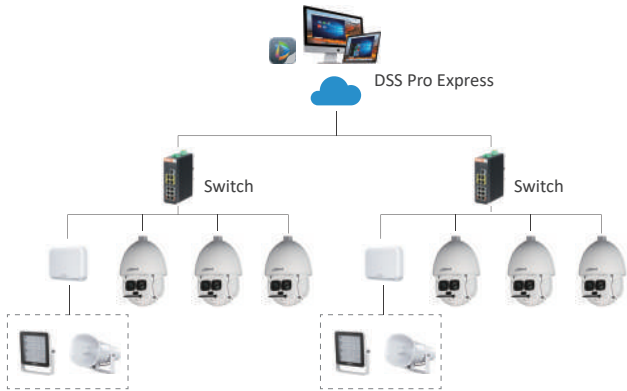
- Multi bus bar solar cells, more steady current collection capability, effectively reducing losses
- 0 to +5W positive tolerance, generating more power for users
- Excellent performance in low light environment with surface texturing technology of glass and solar cells
- 2400Pa wind load and 5400Pa snow load certification
- Applicable to various harsh environments such as high altitude, highly concentrated salt fog, and severe cold

# Accessory Radar

## Overview

It adopts a 24 GHz radar chip for 24/7 all-weather high-accuracy detection in the range of 120 m/120°. It also supports radar-PTZ smart tracking, which is compatible with common Dahua speed domes. With radar detection and intelligent algorithms, ultra-low false positives and zero false negatives are achieved around the clock. Multiple PTZ cameras can be linked to one radar, and wide range global arming and detail tracking are realised simultaneously. The product is widely applied to various perimeter and intrusion arming sites including homes, warehouses, prisons, airports, and oil fields, providing users with a safer and more valuable security protection solution.

- High Reliability
- Smart tracking with PTZ
- Comprehensive Detection
- Centralised Management Platform



## Highlights

**High Reliability:**  
Offers 24/7 protection with high detection accuracy.

**24/7**  
Radar detection is different from video surveillance. It can work normally in severe conditions like dark environments, smog, haze, rain, and snow.

**Protection**  
The radar system allows  $\pm 25\%$  input voltage tolerance, suitable for outdoor applications with unstable conditions. Its 8KV lightning rating provides effective protection for both the camera and its structure against lightning strikes. It meets IP67 and IK09 ingress protection, and FCC ID and CE RED standards.

**High Detection Accuracy**  
Factors like moving shadows, small animals, insects, raindrops, light and strong wind often result in false alarms. With the filtering algorithm applied, the false alarm rate is greatly reduced.



**• Smart Tracking with PTZ :**

Offers 24/7 protection with high detection accuracy.

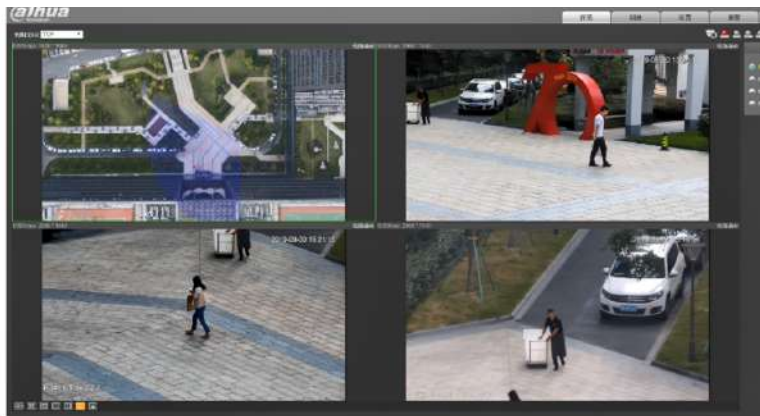
**Smart Tracking**

Supports target trajectory display, PTZ tracking, multiple target tracking, and multi-motion detection.



**Radar with Multi-PTZ Integration**

Supports multiple speed dome cameras and achieves multi-target simultaneous monitoring and tracking.



**Video Metadata**

Provides realtime display of the distance and angle between dynamic target and radar, as well as moving speed, and identification of people and vehicles.



**• Comprehensive Detection :**

Horizontal 120-degree with extra wide angle detection range; three radars cover 360-degrees

Supports radar configurations and management of multiple radars on platforms; displays radar-PTZ smart tracking on the map.



Accessory Radar



**PFR4K-D450**  
450m Security Radar

- 24/7 all-weather
- Wide-range detection
- High accuracy
- Target filtering
- Radar-PTZ integration
- Front-end PTZ control
- Centralized management
- Smart tracking
- IP67/IK10
- CE RED



**PFR4K-D300**  
300m Security Radar

- 24/7 all-weather
- Wide-range detection
- High accuracy
- Target filtering
- Radar-PTZ integration
- Front-end PTZ control
- Centralized management
- Smart tracking
- IP67/IK10
- CE RED



**DH-PFR4K-E120**  
120m Security Radar

- 24/7 all-weather
- Wide-range detection
- High accuracy
- Target filtering
- Radar-PTZ integration
- Front-end PTZ control
- Centralized management
- Smart tracking
- IP67/IK09
- FCC ID/CE RED



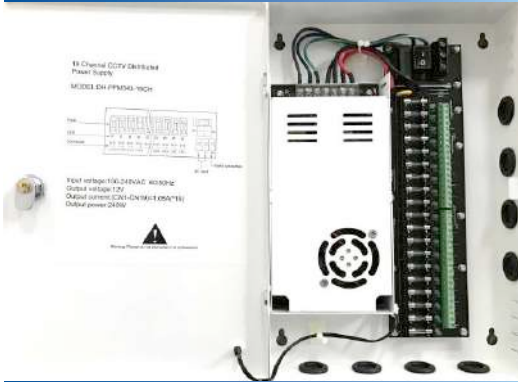
**PFR4K-E50**  
50m Security Radar

- 24/7 all-weather
- Wide-range detection
- High accuracy
- Target filtering
- Radar-PTZ integration
- Front-end PTZ control
- Centralized management
- Smart tracking
- IP67/IK09
- FCC ID/CE RED

## Accessory

### Powering (Distributed Power Box)

#### Highlights



- **Wide-range voltage input:** Meet the requirements for electric network fluctuations.
- **High quality and reliable:** Passes 3 months' high temperature aging test.
- **Multiple protection:** Individual LED output indicator.
- **Metal case by lock:** Each output with independent fuse.
- **Widely used, flexible:** Professional wall-mounted installation with reserved outlet holes, convenient and flexible.

#### Distributed Power Box



**PFM340-5CH**  
**DC12V 4A 5-ch CCTV Distributed Power Supply Box**

- 5 Channel security camera power supply distribution box with individual LED output indicator and metal case with lock key to prevent unauthorized access
- Wide voltage input: AC90~264Vac, meets the requirements in different parts for electric network fluctuations
- High quality and reliability: Passed 100% quality examination and 3 months of high temperature aging testing
- With overload protection, over-current protection, over-voltage protection, anti-static and anti-interference ability
- Professional wall-mounted installation with reserved outlet holes, offering convenience and flexibility



**PFM341-9CH**  
**DC12V5A 9-ch CCTV Distributed Power Box**

- 9 Channel security camera power supply distribution box with individual LED output indicator and metal case with lock key to prevent unauthorized access
- Wide voltage input: AC90~264Vac, meets the requirements in different parts for electric network fluctuations
- High quality and reliability: Passed 100% quality examination and 3 months of high temperature aging testing
- With overload protection, over-current protection, over-voltage protection, anti-static and anti-interference ability
- Professional wall-mounted installation with reserved outlet holes, offering convenience and flexibility



**PFM342-9CH**  
**DC12V 10A 9-ch CCTV Distributed Power Supply Box**

- 9 Channel security camera power supply distribution box with individual LED output indicator and metal case with lock key to prevent unauthorized access
- Wide voltage input: AC90~264Vac, meets the requirements in different parts for electric network fluctuations
- High quality and reliability: Passed 100% quality examination and 3 months of high temperature aging testing
- With overload protection, over-current protection, over-voltage protection, anti-static and anti-interference ability
- Professional wall-mounted installation with reserved outlet holes, offering convenience and flexibility





**PFM343-19CH**  
**DC12V 20A 19-ch CCTV Distributed Power Supply Box**

- 19 Channel security camera power supply distribution box with individual LED output indicator and metal case with lock key to prevent unauthorized access
- Wide voltage input: AC90~264Vac, meets the requirements in different parts for electric network fluctuations
- High quality and reliability: Passed 100% quality examination and 3 months of high temperature aging testing
- With overload protection, over-current protection, over-voltage protection, anti-static and anti-interference ability
- Professional wall-mounted installation with reserved outlet holes, offering convenience and flexibility

**Powering (Switching Power)**

**Highlights**

- **Wide-range voltage input:** Meets the requirements for electric network fluctuations.
- **High quality and reliable:** Passes 3 months' high temperature aging test.
- **Functional characteristics, widely used, Flexible:** Supports supply power to multi-channel cameras/devices simultaneously.
- **Supports adjustable output voltage:** Professional wall-mounted installation with reserved mounting holes, simple and flexible.



- PFM320S-50/150**
- Input: AC90~264V
  - Output: DC12V 50W/150W
  - -20°C~+50°C (60% output at +70°C) working temperature
  - Wall mount/plane mount

**Switching Power**



**PFM320S-50/PFM320S-150**  
**DC12V 50W/150W Switching Power Supply**

- 90~264Vac wide-range voltage input, meets the requirements in different parts for electric network fluctuation
- Supports supply power to multi-channel cameras simultaneously to meet the demand of different loads for power supply
- Supports output voltage adjustment: can adjust output resistance to select the right output voltage (±10%) for different loads, which is flexible in field applications
- High quality and reliable: Passed 3-month high temperature aging test



**PFM321S-75**  
**DC24V 75W Switching Power Supply**

- 90~264Vac wide-range voltage input, meets the requirements in different parts for electric network fluctuation
- Supports supply power to multi-channel cameras simultaneously to meet the demand of different loads for power supply
- Supports output voltage adjustment: can adjust the output resistance to select the right output voltage (±10%) for different loads, which is flexible in field applications
- High quality and reliable: Passed 3 months of high temperature aging test.

## Powering (UPS)

### Highlights

• **Line-interactive UPS :**

- Wide input voltage range: 140~290Vac
- Boost and buck AVR for voltage stabilization
- Simulated sine wave
- 2-6 ms switching time
- Off-mode charging
- Cold start function and full protection
- Continuous power supply for preventing data loss
- Compact size



To solve some power quality issues, such as voltage well, voltage sag and voltage interruption, which bring customers an amount of loss. Mostly used in personal homes, small shops, security rooms, retail and cashier desks, intelligent buildings, etc.



PFM350-360  
600VA 360W



PFM350-900  
1500VA 900W



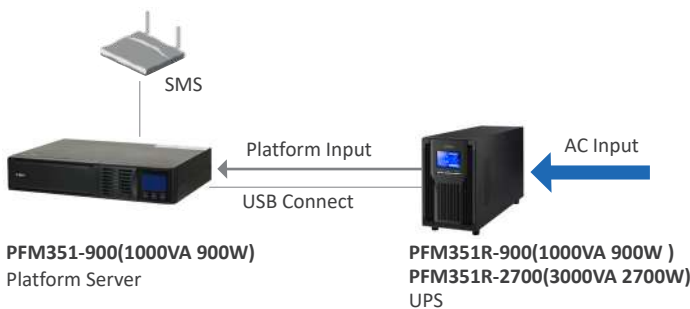
• **Smart Online UPS :**

- Wide input voltage range: 110~300Vac.
- Microprocessor control optimizes reliability.
- ECO mode for energy saving ECO, and output power factor 0.9.
- Generator Compatible.
- Converter mode available, true double-conversion, 0ms switching time.
- Smart SNMP works well with either USB or RS-232 together.
- Comprehensive display allows easy monitoring and access of UPS status.



To solve some power quality issues, such as voltage well, voltage sag and voltage interruption, which will bring customers an amount of loss. Mostly used in critical places, such as banks, communication, office buildings, central management, net-bar, etc.

Rack-mount, optional cabinet: PFC200D series





UPS



**PFM350-360/PFM350-900**

**600VA/360W & 1500VA/900W Line-interactive UPS**

- Wide input voltage range: AC81~145V or AC140~290V, meets the requirements in different parts for electric network fluctuation
- Boost and buck AVR for voltage stabilization
- Off-mode charging, cold start function and full protection
- Continuous power supply to prevent data loss
- Compact size



**PFM351R-900/PFM351R-2700**

**1000VA 900W & 3000VA 2700W Rackmount Uninterruptible Power Supply(UPS)-Smart online**

- Intelligent interconnection, no need to be on duty
- Output power factor 0.9
- ECO mode for energy saving and generator compatibility
- Wide input voltage range, stabilized voltage protection, and filters out all kinds of power interference
- Microprocessor control optimizes reliability; converter mode available
- Comprehensive display allows easy monitoring and access of UPS status



**PFM351-900**

**1000VA/900W Smart online UPS**

- Wide input voltage range: AC110~300Vac, meets the requirements in different parts for electric network fluctuation
- ECO mode for energy saving and generator compatibility
- Achieves true double-conversion; microprocessor control optimizes reliability; converter mode available
- Smart SNMP works well with either USB or RS-232 together
- Comprehensive display allows easy monitoring and access of UPS status

## Accessory Cabinet

### Overview

Cabinet products provide protection and a stable working environment for storage devices. They serve as a shield against electromagnetic interference.

### Highlights

#### • Aesthetic Design

- Made of SPCC
- Crescent door lock
- Upper/Bottom wiring

#### • Standard Rack

- 19" rackmount installation
- Fixed laminates
- Square hole with U number

#### • Various Installation

- Wall mount and plane mount





Accessory Cabinet



DH-PFC200D-6/9/12U4D

19" 6U Rack Cabinet

- Aesthetic design
- Standard 19" rack
- Supports wall mount and plane mount
- Removable side panel, which makes it for installation and maintenance
- Cable entry on the top cover and bottom panel



PFC200D-18U6D

19" 18U Rack Cabinet

- Aesthetic design
- Standard 19" rack
- Supports wall mount and plane mount
- The four sides (around) of the cabinet can be opened, which makes it for installation and maintenance
- Cable entry on the top cover and bottom panel



PFC200D-42U8D

19" 42U Rack Cabinet

- Aesthetic design
- Standard 19" rack
- Supports wall mount and plane mount
- The four sides (around) of the cabinet can be opened, which makes it for installation and maintenance
- Cable entry on the top cover and bottom panel

## Accessory Surveillance Box

### Overview

Outdoor Surveillance Box PFA142 protects the main power supplies and end-devices of secondary circuits from weather influence with all-aluminum shell design, which can achieve IP66 and IK10 protection level.

### Highlights



- Integrated installation
- Supports MNVR local storage
- Multi-compatible
- IP66, IK10

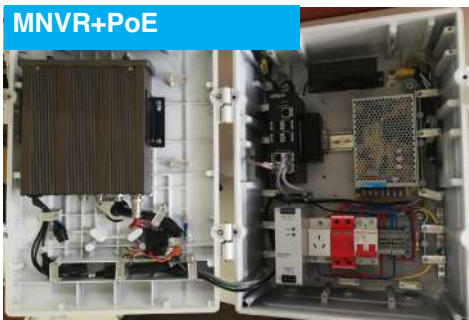


PFA142

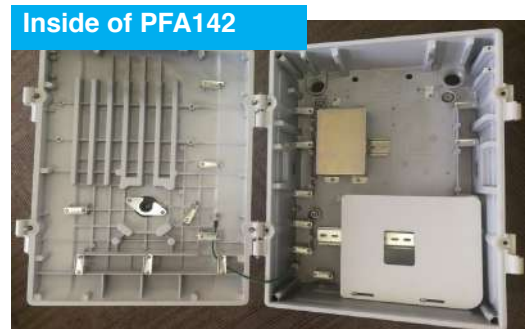













Pole-mount PFA153

### MNVR+PoE



### Inside of PFA142



	--				
DH-PFA143	--	ZSM3-20	B1N2C16	DH-PFM320S-150	DH-ARD312
Outdoor surveillance box	Socket	Lightning arrester of the primary circuit	Air circuit breaker	DC12V Switching power	Alarm switch
					
PFC620-D1	MNVR4208	ZZRJ45	PFS3110-8P-96	DRL-48V120W1AAD	AC24V, 1.5A/3A
Fan	MNVR	Network lightning arrester	PoE switch	DC48V Power adapter of switch	AC24V, 1.5A/3A power adapter





Accessory\_Surveillance Box



**PFA143**  
**Outdoor Surveillance Box**

- All-aluminum shell design, IP66, IK10
- Satisfies the installation of power supply, switch and protective devices
- Optional fans for high temperature heat dissipation
- Tamper alarm function with an optional alarm switch
- Aesthetic design, easy installation



**PFM377**  
**Outdoor Distribution Box**

- Neat and integrated design; pole mount
- Material: SUS201 & SGCC



**PFC620-D1**  
**Special Cooling Fan for Outdoor Surveillance Box**

- Material: SECC
- Special cooling fan for outdoor surveillance box
- Optional fan for high temperature heat dissipation

# Video Management Software

## DSS Express

Start your business with DSS Express: Scalable to meet your future needs.

### Overview

DSS Express is an easy-to-use and reliable VMS for single-server installations, which can meet the core requirements of video surveillance in small and mid-sized projects. Devices can easily be extended with a license and provides a unified solution with access control, video intercom, facial recognition and ANPR for small and medium-sized organisations. It is the ideal VMS for small and mid-sized projects, such as residences, shops, factories, etc.

- **Easy to Use**

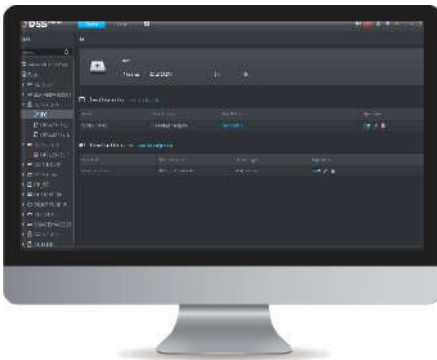
- Combines management and operation functions in client.
- Unified resources management, convenient business config.
- Import devices from smartPSS.

- **High Reliability**

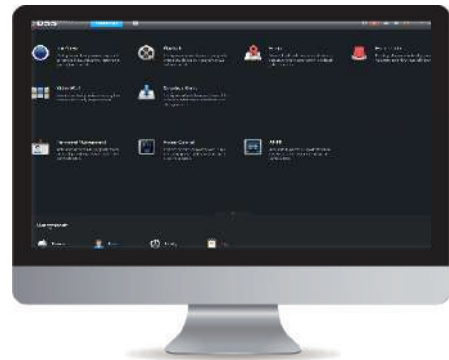
- DSS Express can backup the database automatically and manually, you can restore the database by the automatic backup files and manual backup files whenever you want

### Highlights

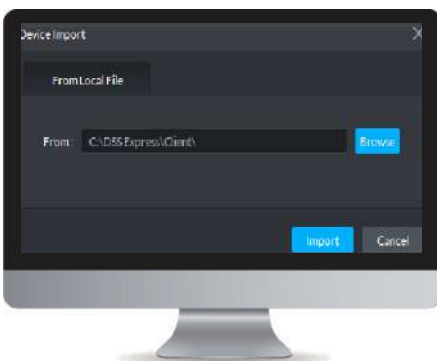
- **Easy to Use:**



Combines management and operation functions in client



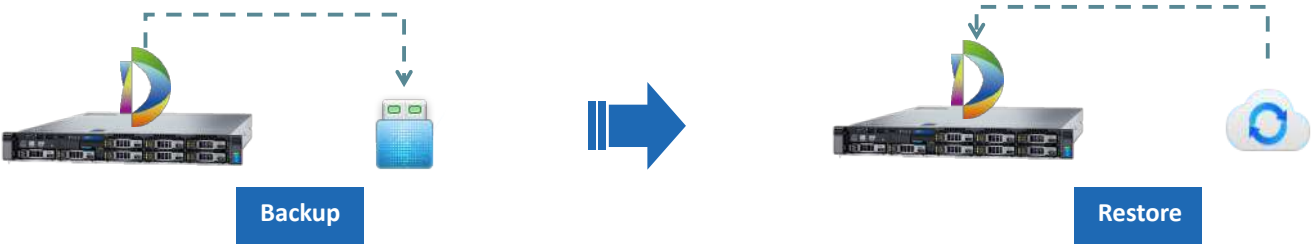
Unified resources management, convenient business config



Import devices from smartPSS

• **High Reliability:**

DSS Express can backup the database automatically and manually, you can restore the database by the automatic backup files and manual backup files whenever you want



• **Application Scenario** (DSS Express is a feature-rich but easy-to-use VMS, which meets the core requirements of small-scale applications, it's the ideal VMS for small and mid-sized projects.)



**Residence**

- Provides an all-in-one and interconnected solution: access control, video intercom, alarm controller and can be integrated with video, which will help security guards to respond to abnormal events.
- Monitor all residents using multiple screens and video wall in surveillance center.
- Video Intercom can be operated using smartphone so residents won't miss any visitors.



**Retail Shop**

- Windows software, easy to deploy
- Local disk management for center storage, which reduces the costs of IVS alarms, such as tripwire, object abandoned, etc., protects asset effectively etc.

# Video Management Software

## DSS Pro

Innovative and smart solution for large-scale needs or large industrial applications.

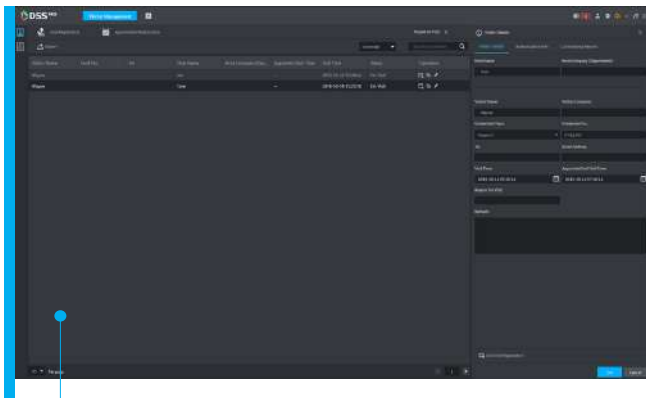
### Overview

DSS Pro is a comprehensive and expandable VMS. Beside its basic CCTV functions, it also supports GIS map, system maintenance, POS transaction, ANPR, People Counting, etc. You also can extend functions, Traffic, Business Intelligence, via add-on modules.

- Visitor Management (Visitor Appointment; Visit Registration; End Visit Registration; Visit Record)
- Alarm Controller (Perimeter; Infrared Detect; Zone Disarm; PIR; Gas Sensor; Smoke Sensor; Glasses Sensor; Stolen Alarm)
- Business Intelligence (Entrance Analysis; Customer Demographic; Indoor Analysis; Fisheye; People Counting; Face Detection)
- Radar Smart Track (Add a radar relation; Radar PTZ smart track)

#### • Visitor Management:

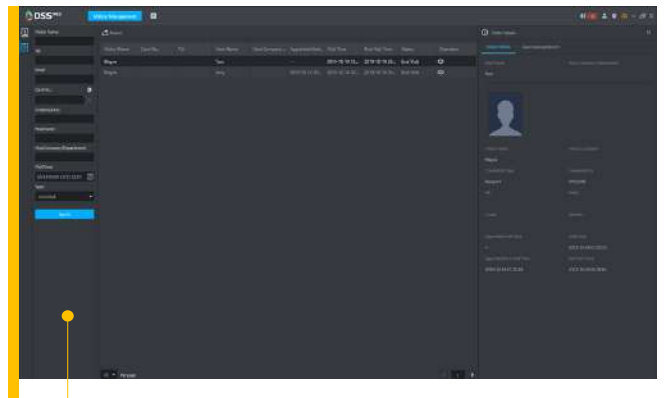
Visitor Appointment; Visit Registration; End Visit Registration; Visit Record



01

#### Visitor Management

- Visitor Appointment
- Visit Registration
- End Visit Registration

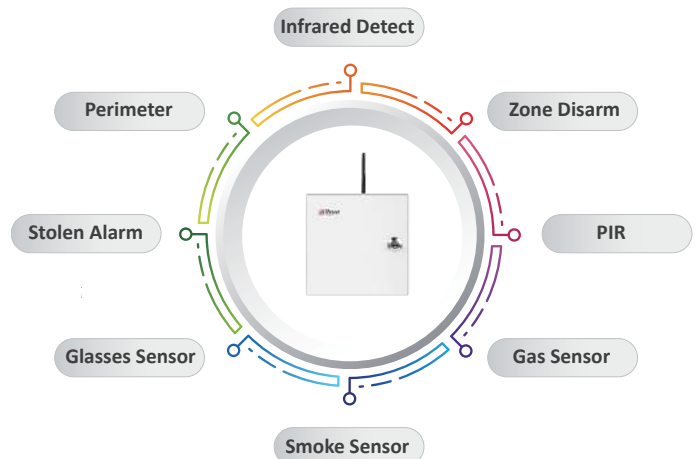


02

#### Visit Record

#### • Alarm Controller:

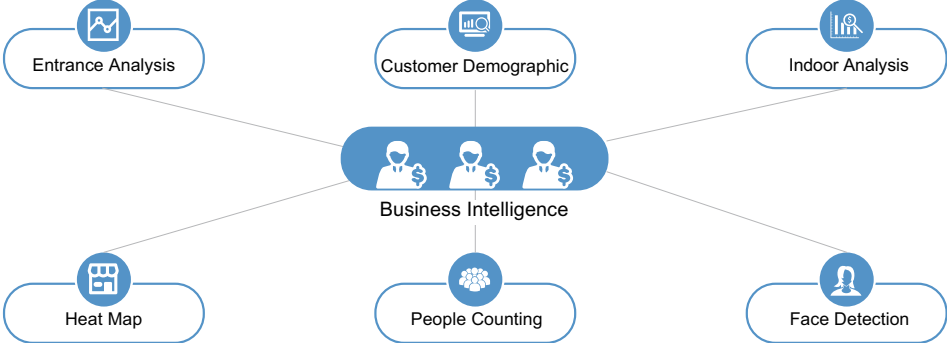
Perimeter; Infrared Detect; Zone Disarm; PIR; Gas Sensor; Smoke Sensor; Glasses Sensor; Stolen Alarm





**• Business Intelligence:**

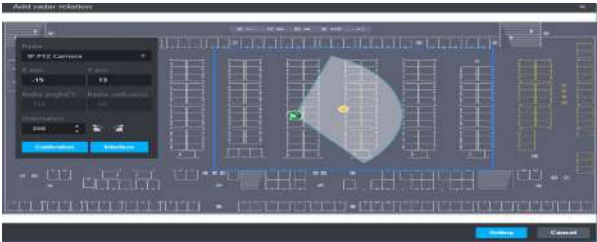
Entrance Analysis; Customer Demographic; Indoor Analysis; Fisheye; People Counting; Face Detection



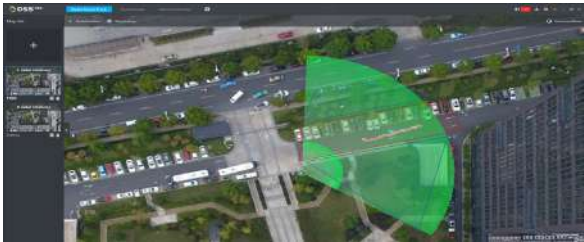
**• Radar Smart Track:**

Add a radar relation; Radar PTZ smart track

**New/Radar Smart Track**



Add a Radar Relation



PTZ Smart Track

**DMSS**



## Digital Mobile Surveillance System

Monitor Anything with Your Smartphone or Tablet Anytime, Anywhere

Devices	Supported Devices	DVR, NVR, IPC, VTO, DoorBell, Alarm Hub
	Add Device Method	IP/domain, SN, Import form cloud, Soft AP
	Features	Remote config, Alarm config, HDD info, Share device list
Video	Compression Format	H.265/H.264/MPEG-4/JPEG
	Display Resolution	Up to 1920x1080
Live Preview	Max. Channels Can Be Opened at The Same Time	256
	Features	Snapshot, Record, Instant playback, PTZ, Stream control, Talk, Audio, Alarm, Color, Favorites, Remember channels
Playback	Video Playback Duration	72 hours
	Features	Snapshot, Record, Speed up / slow down, Frame-by-frame, Cut
Alarm Push	Alarm Type	Motion detect, Camera masking, Local alarm, Disk alarm (no disk, Low space, disk Error), Face detection, lvs alarm, Thermal Imaging Alarm, Defoucs, Audio Detect, HDD Alarm, Sensor Alarm, Network Alarm
	Push Type	Video, Preview, Image

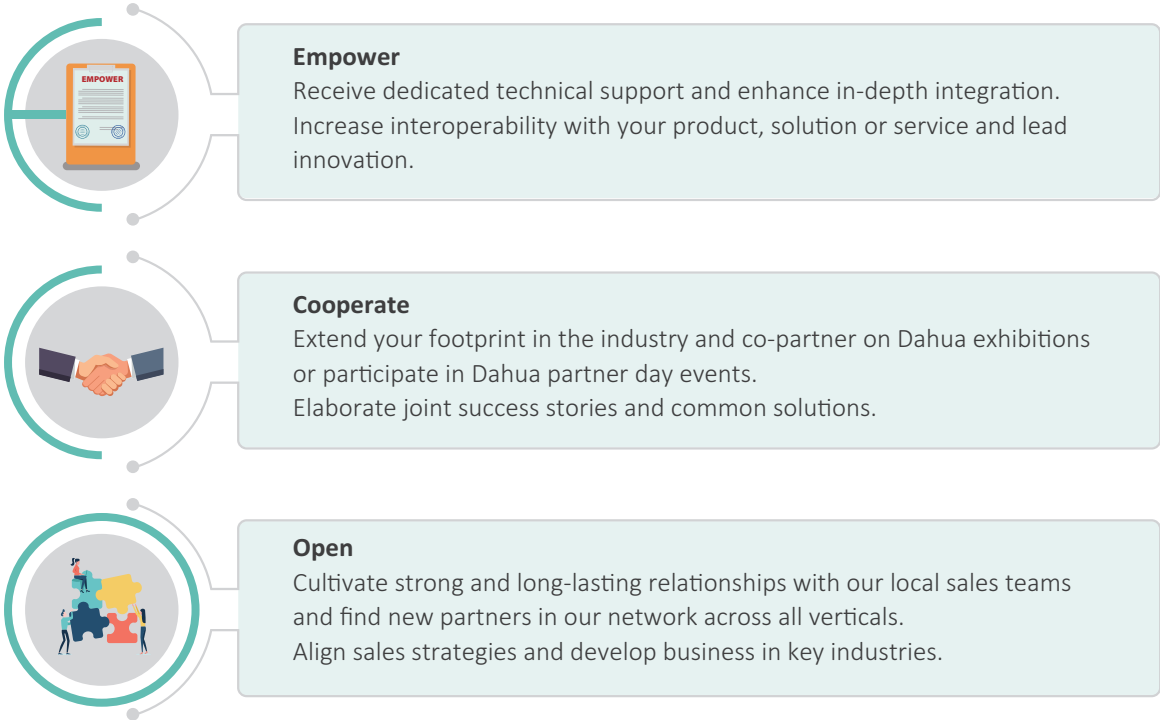




# Dahua Eco System

## Overview

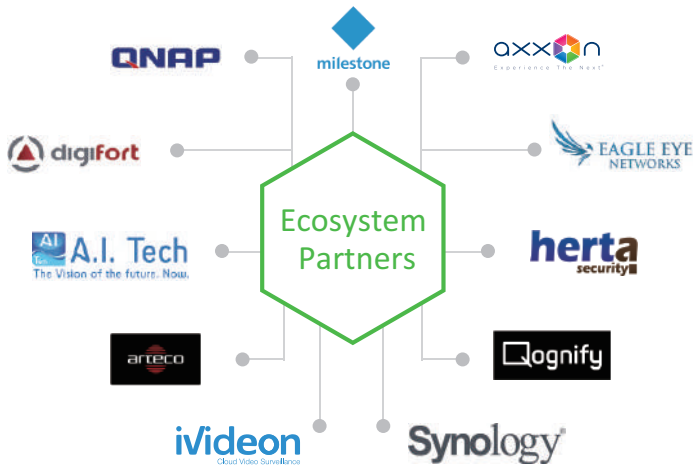
Today’s end-users demand more and more comprehensive solutions. Alliances with technology vendors are key for delivering those value drivers. A joint approach for a seamless integration adds value for end-users. Dahua embraces this philosophy and welcomes third-party complementary solutions and promotes more interoperability.



- **Great Compatibility with Technology Partners**
  - Experience full integration and compatibility with more than 200 technology partners, such as Milestone, Genetec, AxxonSoft, etc.
  - Advanced features like face recognition, perimeter protection, people counting are supported with partners, which create different solutions to meet different requirements.

- **Open Architecture**
  - Dahua Open Platform (DHOP) allows third-party applications to be downloaded and installed on Dahua Network Cameras.
  - More than 10 technology partner applications embedded, bringing more flexibility to our customers.

- **Open Protocol**
  - Sufficient API provided by Dahua, which allows any technology partners to work with Dahua products.
  - Complete SDK demo and API document available on our website, with excellent customer support.
  - Standard protocols, like ONVIF, Wiegand are supported by Dahua products, allowing you to use Dahua products with third-party software even without any integration.







## Address & Telephone

---

### Dahua UK & Ireland (Head Office)

Quantum House  
60 Norden Road  
Maidenhead  
Berkshire  
SL6 4AY  
Tel: +44 (0) 1628 613 500

### Dahua UK & Ireland (Leeds Office)

Ground Building  
No.3 White Rose Office Park  
Millshaw Park Lane  
Leeds  
LS11 0DL

**Technical Hotline:** +44 (0) 1628 613 500

## Official Website

---



[www.dahuasecurity.com/uk](http://www.dahuasecurity.com/uk)

## Dahua Email Contact

---

**Sales:** [sales.UK@dahuatech.com](mailto:sales.UK@dahuatech.com)

**Tech:** [support.UK@dahuatech.com](mailto:support.UK@dahuatech.com)

## Social Media

---



LinkedIn

Dahua UK & Ireland



facebook

Dahua UK & Ireland



You Tube

Dahua UK & Ireland



Dahua UK & Ireland



## Driving Innovation to an AIoT Future

\* AIoT is the combination of Artificial Intelligence (AI) and the Internet of Things (IoT) where connected devices meet human interface. This is enabling unlimited possibilities through the integration of connected devices and security solutions.

\* Design and specifications are subject to change without notice.

Ver.1, July 2020

### **DAHUA UK & IRELAND**

Quantum House, 60 Norden Road, Maidenhead, Berkshire SL6 4AY Tel: +44 (0) 1628 613 500  
sales.UK@dahuatech.com  
support.UK@dahuatech.com

